

Midwest Big Data Hub

Accelerating the Big Data Innovation Ecosystem



Brian Athey

Sarah Nusser

Beth Plale

Josh Riedy

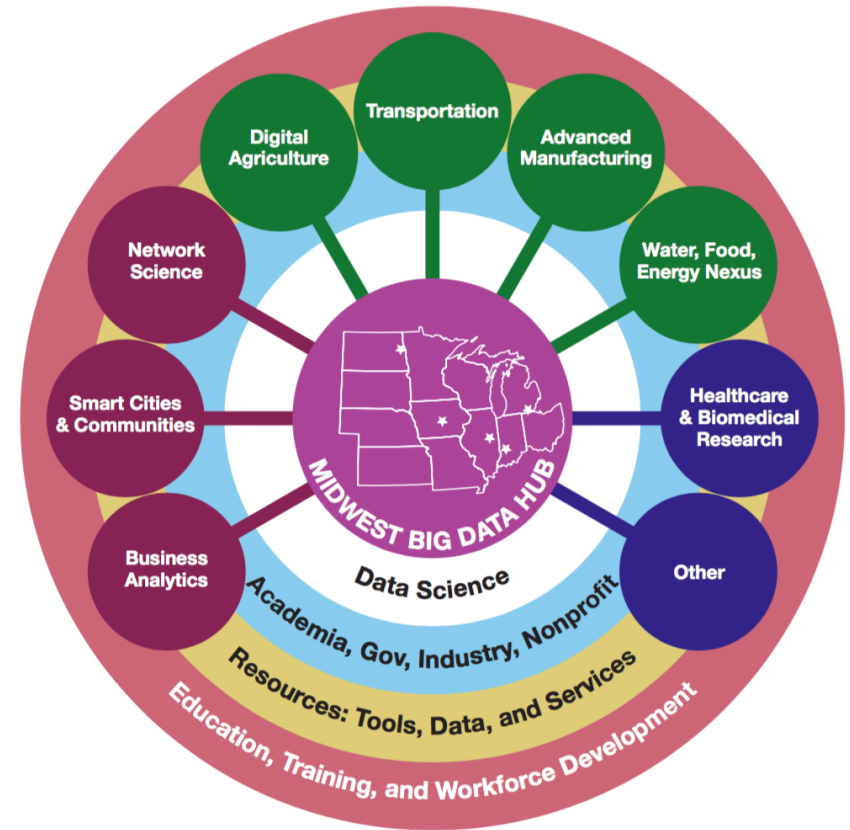
Ed Seidel

SEEDCorn: Sustainable Enabling Environment for Data Collaboration (MBDH)

- A partnership among academia, government, industry, nonprofit entities
- Over 100 partners already
 - Colleges, Universities, Medical Centers, of all types
 - Industry, Non-profits, NGOs
 - States, cities, communities
- Ramping up outreach efforts

Spokes *Currently Underway* at MBDH

- Network Science
- Metropolitan Science
- Business Analytics
- Digital Agriculture
- Transportation
- Advanced Manufacturing
- Food, Energy, Water
- Healthcare & Biomedical Research
- Others as proposed...
 - *Materials*



Crosscutting Rings Supported by MBDH

- **Data Science**

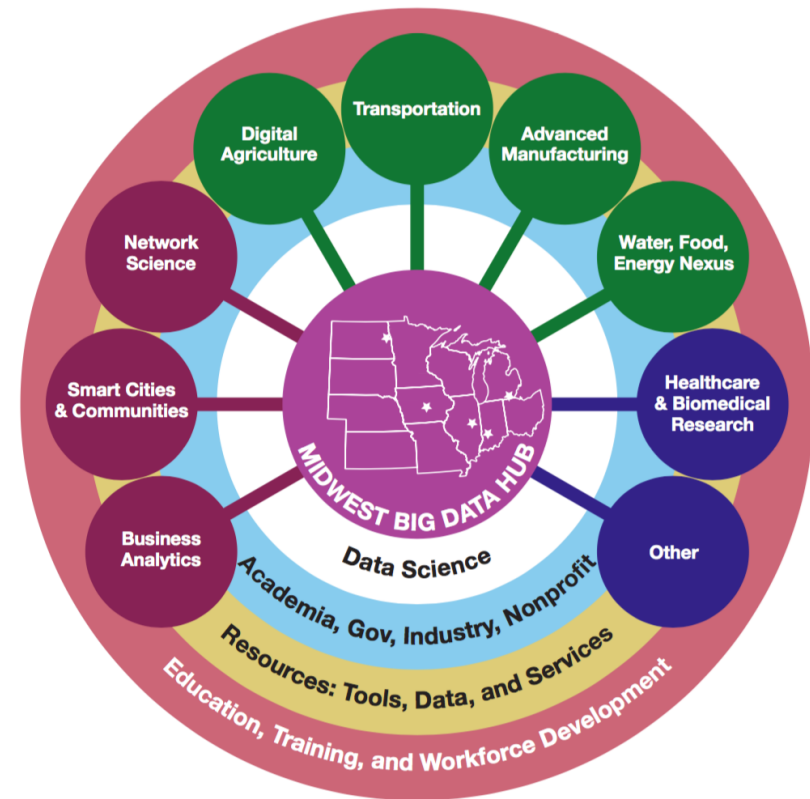
- *Including Data Intensive Research in the Social, Behavioral, and Economic Sciences*
- *Replicability and Reproducibility in Data Science*

- **Education**

- *Including new approaches to STEM learning environments...*

- **Data Tools and Services**

- Data sets
- Services to share data and tools to act on them



Goals and Outcomes/Impacts Expected

- Developing and securing funding for new public-private partnerships
 - Additional funding from agencies (NSF, NIH, DOE, NIST, USDA...), NGOs, governments, industry will be sought
- Accelerating technology transfer projects
- Introducing new Big Data educational activities into universities, industry and government
 - Data policies, management, and best practices with real data for real impact
 - Will involve, train many young data scientists

Goals and Outcomes/Impacts Expected

- Starting *pilots* in data environments
 - Collaborations to develop and test new approaches to data sharing, policies, algorithms
 - Work with various organizations to test pilots with real data
 - For example: helping farmers balance productivity and sustainability with detailed data on crop growth, soil conditions & environment
- Developing and implementing new sustainability models
 - Models for long term data stewardship, private-public partnerships, educational practice
 - Different approaches will be needed!

First All-Hands Meeting

- Getting to know who people and organizations across the Hub
 - New connections made there at the meeting that will move activities forward
 - Spokes are energized and organizing workshops
 - Presentations included discussion of Spoke Proposals submitted
 - Hub engaged to understand what spokes need from us
- Hearing from Industry and non-academic partners
 - How do we best partner?
- Refining governance of MBDH

Additional Outcomes

Cross-cutting Ring efforts

- MBDH is leading efforts on the Data and Tools ring
 - a cross-Spoke working group
 - Initiating a cross-hub team
 - Planning a workshop
- Identifying opportunities to develop and disseminate data science training
- Begin to assess Data assets and needs
- Next All-hands meeting slated for September, 2016

Upcoming Hub Activities

Funding Opportunity: CCC-sponsored seed funds

- Enhancing Industry-Academic Big Data Collaboration and Partnerships for Early Career Researchers
 - proposals due 4/1 and 5/1
 - <http://midwestbigdatahub.org/funding/call-for-seed-funding-proposals/>
- Workshops:
 - University of North Dakota (UND) will host an Early Career Big Data Summit (ECBDS) April 6-8, 2016* (incl. a hackathon)
 - Digital Agriculture Spoke All-Hands Meeting May 16-17, Ames

Several more upcoming – will be posted on MBDH website

Thank you

Melissa Cragin, Exec Dir
cragin@illinois.edu

Midwest Big Data Hub

Accelerating the Big Data Innovation Ecosystem

