

# Membership Benefits Outline



Our membership offers an unrivalled level of insight and expertise, and the ability to provide unique knowledge and honest advice on local, regional and national issues from a global intelligence network.

We support our members to facilitate collaborative working and bring about meaningful change in health and social care.

Membership levels are available at different levels and associated benefits to suit your organisation. You can always add further benefits/services to your membership for an additional fee. Learn more about levels and fees [HERE](#)

As a member of the ECHAlliance you will benefit from the following:

## Marketing & Branding opportunities

- o ECHAlliance online Connector Platform profiles (for your organisation -logo, link, description, products & services...- and your team (personal profiles))
- o Promote events and projects on Connector and ECHAlliance News (database of 500+ organisations & 15,000 qualified Digital health contacts)
- o Submit papers, articles (on digital publications – web platform, newsletters/for additional fees with a virtual showroom)
- o Maximise your communication and the dissemination of your ideas, with the built-in social media tools
- o Priority access to international events (Digital Health & Wellness Summit @Mobile World Congress Barcelona-Shanghai, eHealth week...)
- o Opportunities of speaking slots and pop-up exhibition (where possible)



## Market access & ECHAlliance International Network of Ecosystems

- o Network of 30+ multi-stakeholders ecosystems: governments & policy-makers, hospitals and health professionals, companies, researchers, patient's representatives, insurances, investors...
- o Access to all Ecosystems meetings/events (120+/year)
- o Opportunities B2B matchmaking during events to meet your customers and partners (+ personal introductions for Foundation partners – see below)
- o Be part of key leaders working groups, focused on specific topics (eHealth strategy, Digital health for medicine optimisation...)



## Marketplace & Business intelligence

- Engage directly with customers and partners through our web platform CONNECTOR profile directory and communication tools (in-mail/ chat, videoconference)
- Access on CONNECTOR to market surveys, expert publications, case studies, innovation & business methodologies, articles on public policies & regulation
- Benchmark technologies, products/services
- Participate to webinars with key experts
- Discover business opportunities (calls, tenders)



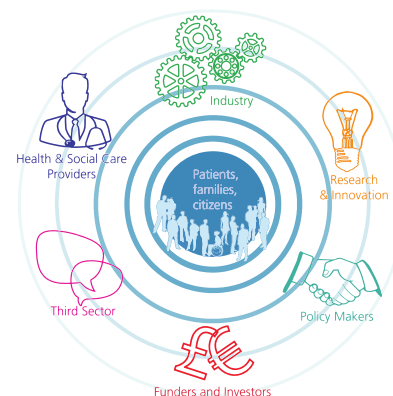
In addition to the above, our **Foundation Partners** benefit from:

- An individual support session on your business strategy
- Targeted introductions and matchmaking
- Higher level visibility and branding
- Speaking opportunities at Ecosystem Meetings and International Events (when possible)
- Hosting webinars and other features within the community
- Sharing thought leadership articles on Connector



**On-demand tailored services** could be provided for specific projects: [see our MAP services](#)

We would be pleased to have a discussion with you so that we may explain and explore the benefits and understand how we may effectively collaborate. Please email us at [membership@echalliance.com](mailto:membership@echalliance.com) to arrange a call.



*The Global Connector*

*Bringing together the Future of Health, Social care and Wellness*