

Getting started

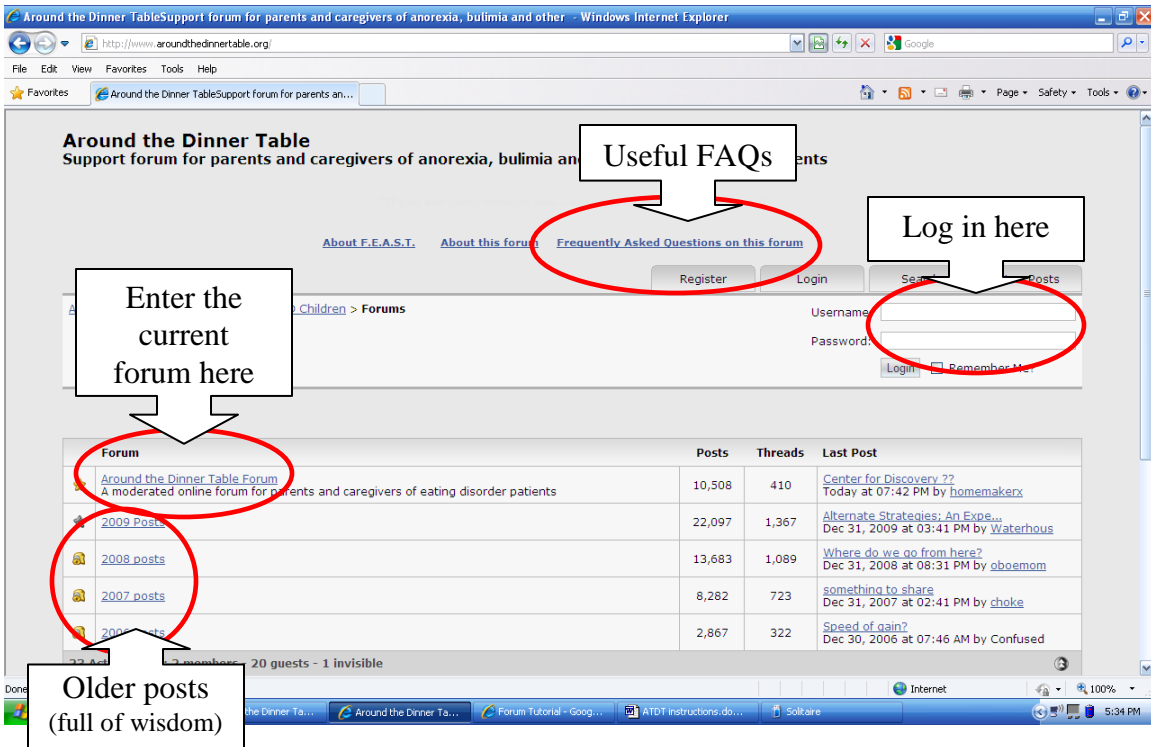
Welcome to Around the Dinner Table!

The screenshot shows the homepage of the 'Around the Dinner Table' forum. The page title is 'Around the Dinner Table Support forum for parents and caregivers of anorexia, bulimia and other eating disorder patients'. There are two callout boxes: one pointing to the 'About this forum' link with the text 'Please read forum rules', and another pointing to the 'Register' button with the text 'Newcomers, register here (one time only)'. The 'Register' button is circled in red. Below the navigation links, there is a login form with fields for 'Username:' and 'Password:', and a 'Login' button. A 'Remember Me?' checkbox is also present. A table of forum statistics is visible, showing the number of posts and users for various years. The bottom of the page shows the Windows taskbar with several open applications.

| Forum | Posts | Users | Latest Post |
|--|--------|-------|---|
| Around the Dinner Table Forum A moderated online forum for parents and caregivers of eating disorder patients | 10,519 | 411 | Other Kids wont let S forget Today at 12:04 AM by girl14AusNSW |
| 2009 Posts | 22,097 | 1,367 | Alternate Strategies: An Expe... Dec 31, 2009 at 03:41 PM by Waterhous |
| 2008 posts | 13,683 | 1,089 | Where do we go from here? Dec 31, 2008 at 08:31 PM by gboemom |
| 2007 posts | 8,282 | 723 | something to share Dec 31, 2007 at 02:41 PM by choke |
| 2006 posts | 2,867 | 322 | Speed of gain? Dec 30, 2006 at 07:46 AM by Confused |

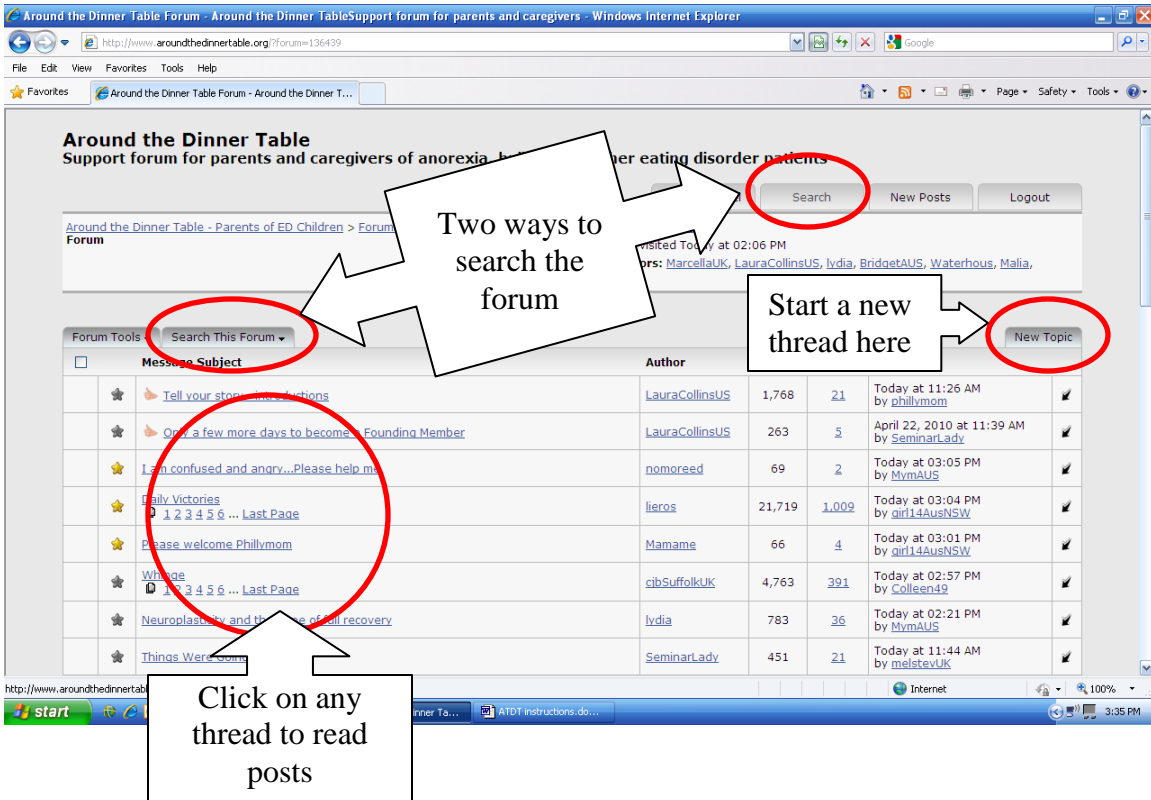
Create a username for yourself. This is the name that will appear on the screen when you post. Choose a name that will protect your privacy. This forum is public and your username will be available to all (however, your private information will only be available for members).

Once you have registered, you will be able to log in at any time on the welcome page.



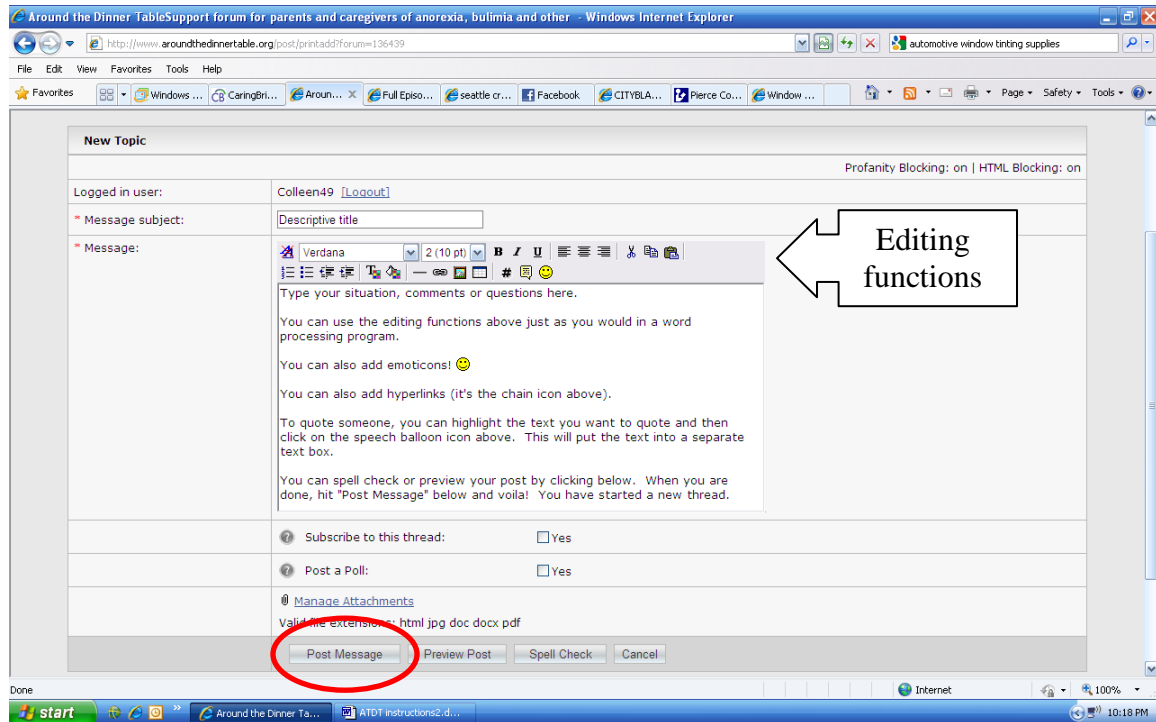
When you are logged in, your username will appear on the Active Users list on the bottom of this page. A green dot will appear next to your name on any posts.

Inside the current forum:



Starting your own thread

When you click on “New Topic” in the upper right corner, you will be directed to this screen:



Give your thread a title in the subject line and then type your message in the large open box. For your first entry, it is a good idea to introduce yourself by describing your child's case and giving us some general details:

- Age and gender of sufferer
- Diagnosis if known
- Duration of sickness
- Treatment methods so far

Then ask your questions; we know you have a few.

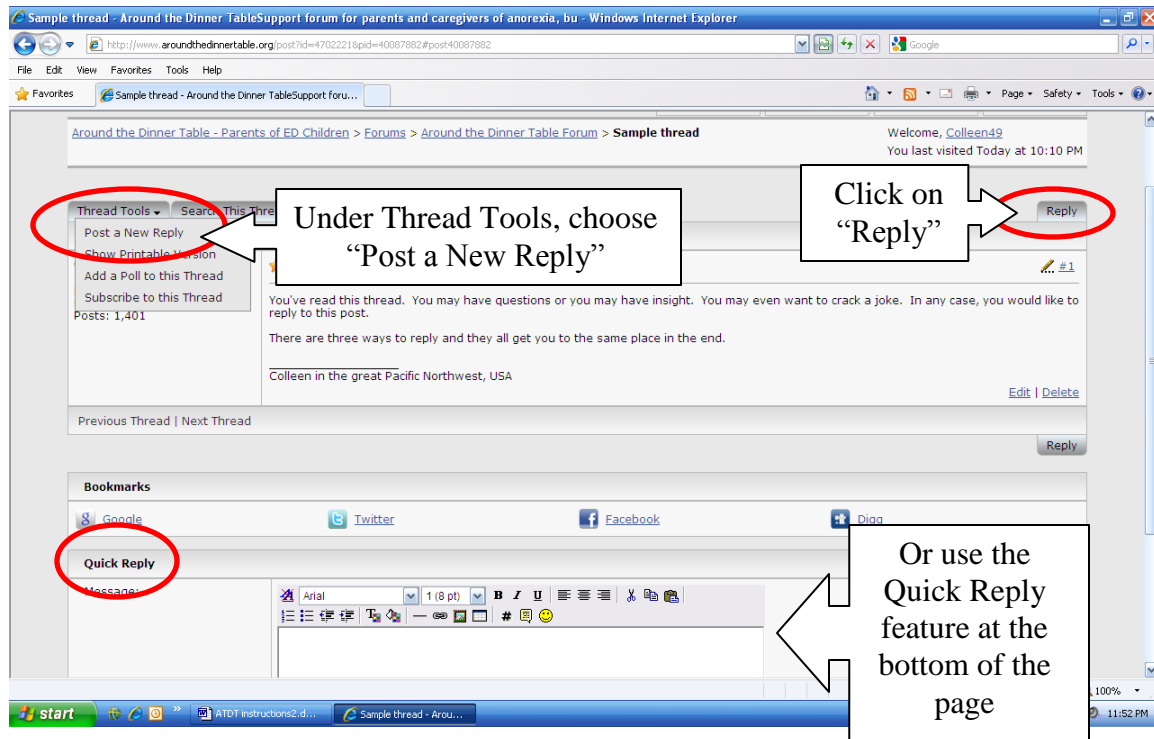
Remember that this is a searchable forum and anything you write is visible to anyone who looks. Be discrete in naming names.

You can spell check and preview your post to see how it will look on the forum screen. Note that “Preview Post” does not make your posting appear on the forum yet.

When you are satisfied, click on “Post Message” to post your new thread on the forum.

Replying to a thread

There are three ways to reply to a thread and they all do the same thing:



Any time after you have posted, you can Edit or Delete your own posts by using the buttons in the lower right of your posts.

Your posts are visible and searchable—keep this in mind while posting. While details of your child’s illness help other members to help you, be aware that professionals and sufferers also lurk on our forum.

If you can’t find your post, there’s a good chance that it has drifted down the list. Try looking back through a few pages. You can also subscribe to your thread (under Thread Tools in the upper left), or search for it under the thread name or author username.

If you would like to contact a member privately, click on the username to send an e-mail (if they have made that available). We call this a “backchannel” conversation.

Welcome to the forum. We hope you find a place of support and friendship during this difficult time.