



SOCIAL WORK QUICK FACTS:

- There are more social workers nationwide than psychologists, mental health counselors, psychiatrists, and marriage and family therapists combined.
- The Bureau of Labor Statistics predicts that employment for social workers is expected to grow faster than the average for all occupations through 2018.
- Approximately 31% of all social workers are employed within the government.
- There are more than 40 schools of social work in Pennsylvania. The Commonwealth is the second largest educator of social workers nationwide.
- There are approximately 40,000 degreed social workers throughout Pennsylvania.



SOCIAL WORKERS CHANGE FUTURES

Social workers make change possible by working with individuals, families, groups and communities to improve human well-being in a variety of ways. Social workers are on the front lines advocating for people and facilitating positive social change. Do you want to be a part of the change? The social work profession may be the field for you.

For more information visit our website:

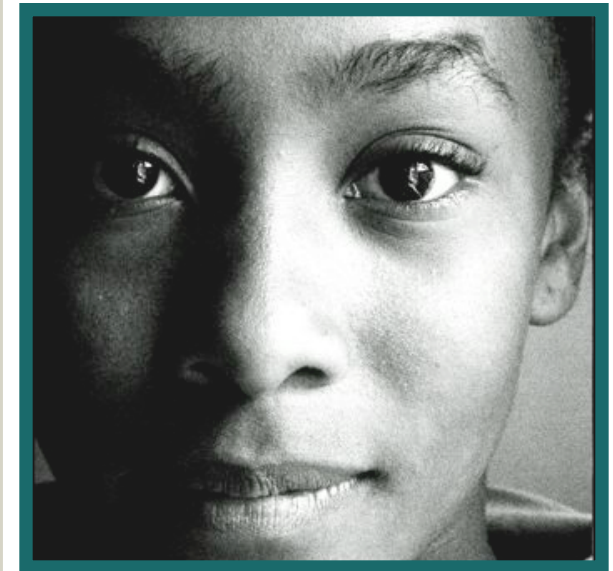
www.NASW-PA.org

Or connect with NASW-PA through Social Media



BSW

BACCALAUREATE SOCIAL WORKER



Courtesy of the National Association of
Social Workers, Pennsylvania Chapter



717-232-4125

www.NASW-PA.org

425 N. 21st Street, Suite 401

Camp Hill, PA 17011

Bachelor of Social Work

What is Social Work?

The main goal of social work is to improve human well-being and help meet the basic needs of all people. Social workers help empower individuals, especially those who are vulnerable, oppressed, and living in poverty. Social workers are committed to social justice and enhancing the quality of life for individuals, families, groups, communities, and systems.

The BSW Curriculum

The BSW Curriculum provides a foundation for social work practice. BSWs are trained in the generalist model of social work, which assures that professional social work skills, values, and knowledge can be applied in working with individuals, groups, families, and communities. The BSW curriculum provides a professional standard of education that can be applied to many diverse settings, populations, and problem areas. This foundation includes a field experience of at least 400 hours. BSW social workers will be educated on content such as:

- **Human and cultural diversity**
- **Human behavior & social environment**
- **Populations-at-risk**
- **Research**
- **Social and economic justice**
- **Social welfare policy and services**
- **Policy development**
- **Social work values and ethics**
- **Assessment, intervention and evaluation**
- **Social advocacy**

Nationally Recognized and Accredited

The BSW is the first level of professional practice within the field of social work. BSW programs meet rigorous academic standards to gain and maintain national accreditation from the Council on Social Work Education (CSWE).

Education in the Field

Field study is an integral and essential component of the BSW curriculum. Students gain at least 400 hours of supervised social work practice in a professional agency in order to apply classroom learning in the field. CSWE mandates minimum standards for field supervisors so that students are learning from qualified professionals with experience in social work practice. Because of this unique standard social work students gain a quality experience and will be ready for the workforce upon graduating from their program.

Value to Employers

A bachelor's degree in social work prepares students for professional social work. Graduates will be ready for immediate entry into the workforce or graduate work at the master's level. They will possess the intellectual, practical, and professional skills needed to promote beneficial change in the lives of their clients and society at large.

Paving the Way for Change



Licensed Bachelor of Social Work

Pennsylvania offers the opportunity for BSW social workers to apply for licensure through the State Board of Social Workers, Marriage and Family Therapists and Licensed Professional Counselors. In order to become licensed a person must hold a BSW degree from an accredited social work program and must pass the exam provided by the Association of Social Work Boards (ASWB). This credential ensures that licensed social workers are held accountable and are continually engaged in professional development through mandated continuing education courses.

Social Work Ethics

Professional social workers are held to a strict code of ethics provided by the National Association of Social Workers. Within this Code of Ethics can be found the six core values of social work practice: service, social justice, dignity and worth of the person, importance of human relationships, integrity, and competence. These values along with the ethical framework provided help social workers deal with ethical dilemmas and stay true to the mission of social work.

This is a low resolution version. To order high resolution, full color, printed brochures from NASW-PA please contact communications@nasw-pa.org for pricing and options.

to see a full list of brochure options visit www.nasw-pa.org/brochures

Thank you!