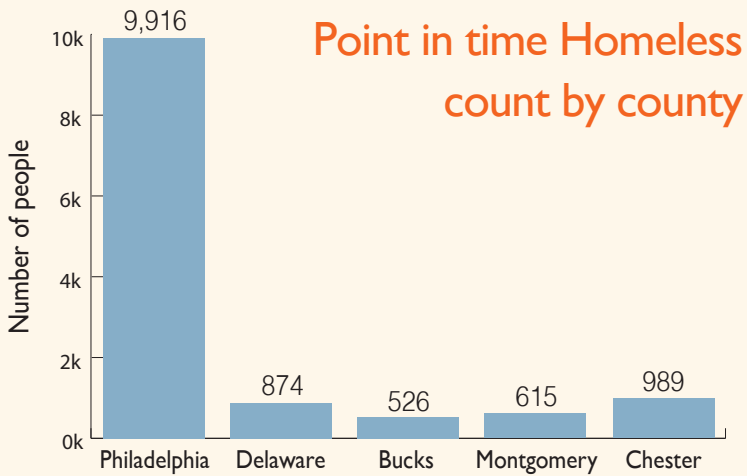
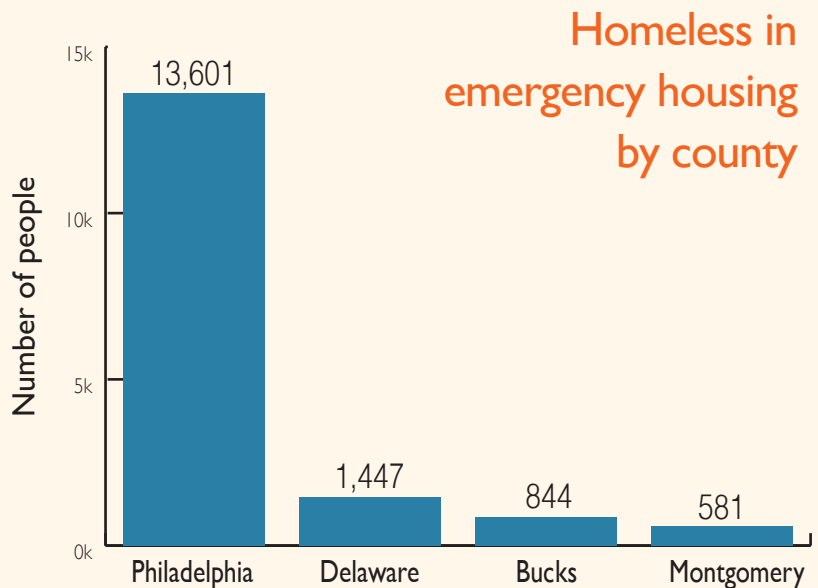
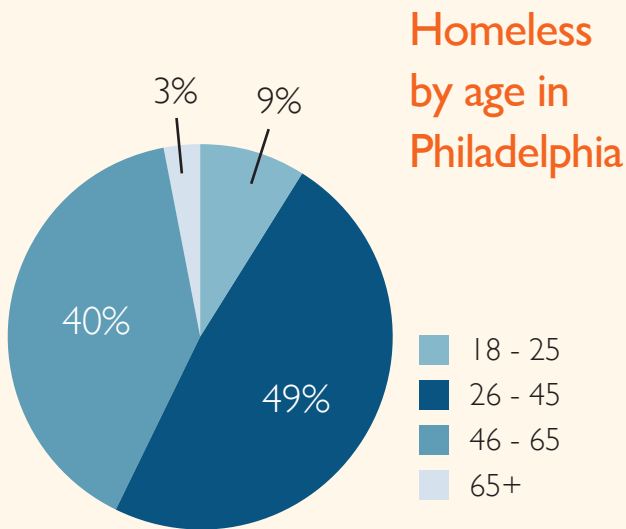
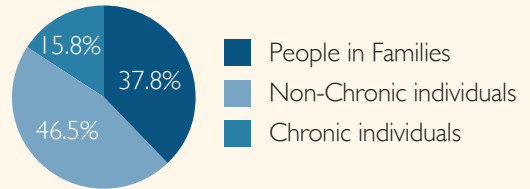


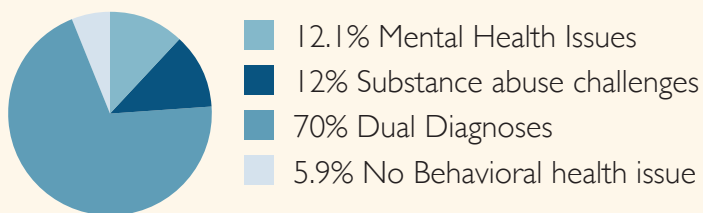
HOMELESSNESS



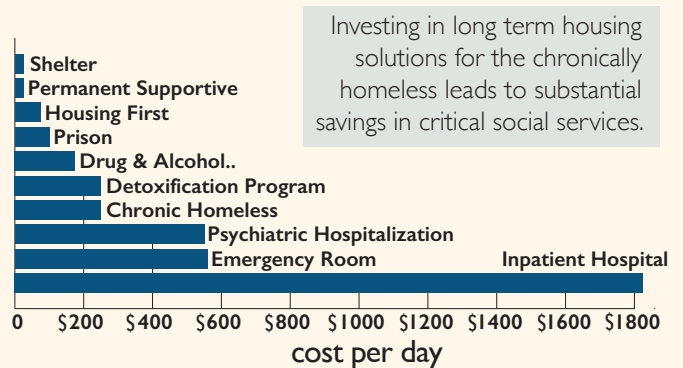
Proportions of major homeless subpopulations in the U.S. [2012]



Mental health and substance abuse % in Philadelphia homeless population



Cost of homelessness to Philadelphia by housing [2010]



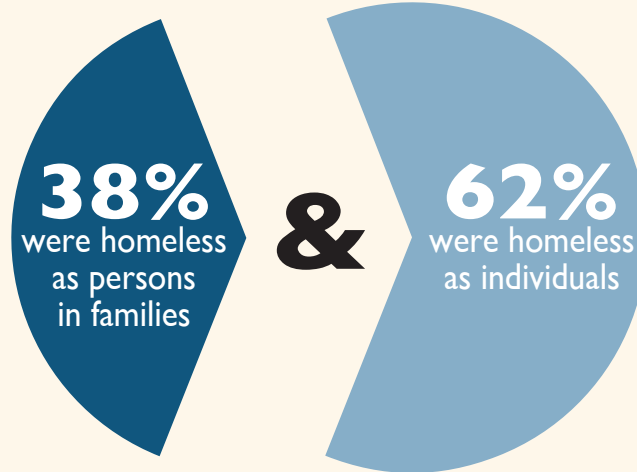
HOMELESSNESS

In January 2012

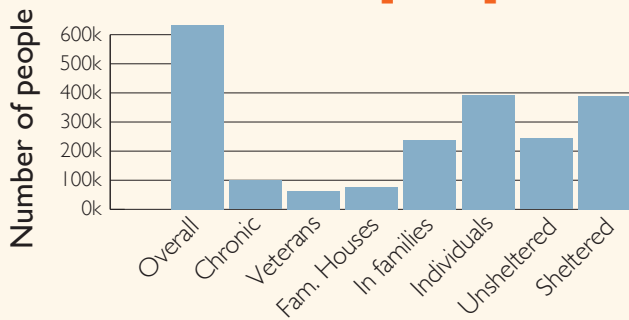
633,782

people were homeless on a single night in the United States.

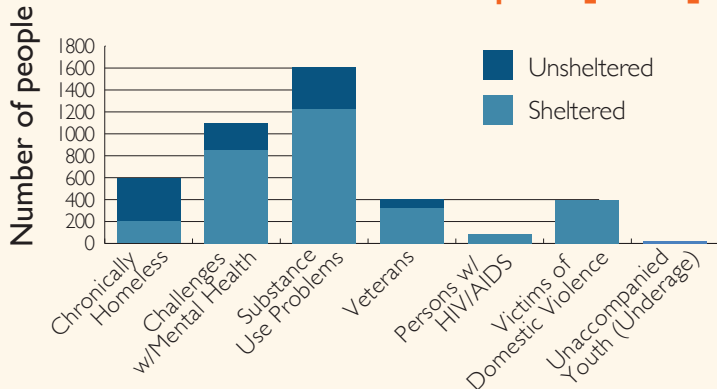
Homelessness has remained stable since January 2011, but has declined by 5.7% since 2007



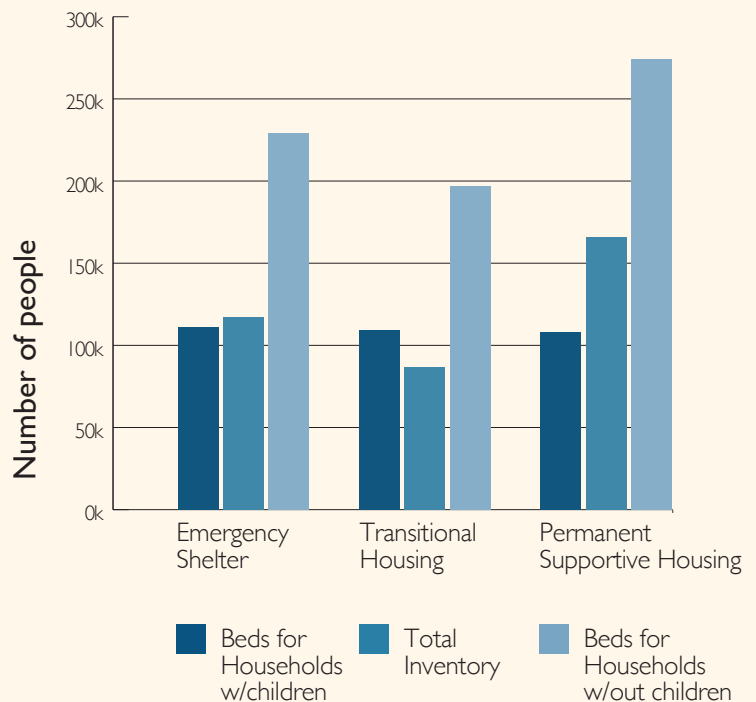
Population & subpopulations in the U.S [2012]



Some contributing causes to homelessness in Philadelphia [2012]



Homeless assistance by bed type and family status in the U.S. [2012]



Sources:

PEC Data on Homelessness
 State of Homelessness in America 2013
 Project HOME facts on homelessness

People's Emergency Center Policy Brief
 Shared Prosperity Philadelphia Plan