

# OVERVIEW



## OSGOOD'S DINING ROOM

### Hours of Operation:

Breakfast:

Monday through Friday, 6am to 9am

Lunch:

Monday through Friday, 11am to 2pm

Dinner:

Sunday through Thursday, 5:30pm to 8:30pm

See your planner for weekend hours.

## PONY EXPRESS BAR & GRILL

The sports bar offers bar service and light fare menu. Billiards, shuffle board and darts are located in the bar with other games available. Special events such as karaoke await your arrival. Many flat panel TV's are available to watch your favorite sporting events!



### The hours of operation are:

Sunday through Thursday, 4pm to 12, midnight

Friday and Saturday, 12, noon to 12, midnight



## TRANSPORTATION

Our shuttle offers service to Montgomery Mall and the Bethesda Metro. Group transportation to and from the local airports is also available upon request. See your planner for details

## BUSINESS CENTERS

There are two business centers to meet your copying, faxing and supply needs (charges may apply).

The hours of operation are:

Monday through Friday 8am to 4pm

### Osgood Building Business Center

Telephone: 301-983-7011

Fax number: 301-983-7263

### Franklin Building Business Center

Telephone: 301-983-7129

Fax number: 301-983-7299



## NOURISHMENT HUBS

The Bolger Center is pleased to offer nourishment hubs throughout the property. Beverages are available Monday thru Friday from 7am to 5pm.

A continental breakfast is offered Monday through Friday from 7am to 11am with afternoon snacks from 1:30pm to 5pm.

See your planner for weekend hours

## FITNESS CENTER/ RECREATION

We are located on 83 acres of beautifully maintained land equipped with a 1.5 mile jogging path. We also have a fitness center that offers a weight room, indoor swimming pool & road bikes for your leisure.



The fitness center is open 24 hours a day, 7 days a week.

The indoor pool hours of operation are:

Monday through Friday 5pm to 10pm.

Saturday & Sunday 8am to 10pm



## COMPUTER LABS

You can use the internet, check email, or print your boarding pass at any of our three Computer Labs on property. See the front desk for locations.

Wireless internet is also available free of charge for your convenience.

## ADDITIONAL INFORMATION

Visit us on the web at [www.BolgerCenter.com](http://www.BolgerCenter.com) or see your planner for more information.



# DIRECTIONS

## **Directions from Dulles Airport (IAD)**

Take Dulles access road (toll road 267) towards Washington, D.C  
Take 495 North towards Fredrick/Baltimore  
At the 495/270 split, take 270 North  
Take the first exit, Democracy Boulevard and turn left at the end of the ramp  
The Bolger Center will be on your left hand side in approximately 2 miles  
Follow signage to guest registration



## **Directions from Reagan/ National Airport (DCA)**

As you exit the airport, you will be on the George Washington Parkway  
Bear right to take 495 North towards Fredrick/Baltimore  
At the 495/270 split, take 270 North (left lanes)  
Take the first exit, Democracy Boulevard and turn left at the end of the ramp  
The Bolger Center will be on your left hand side in approximately 2 miles  
Follow signage to guest registration

## **Directions from Baltimore Washington International Airport (BWI)**

Exit airport on 195 towards 05  
Take 95 South towards Washington, D.C  
Take 495 West towards Northern Virginia and Silver Spring, MD  
Exit Old Georgetown Road and turn right at the end of the ramp  
Move into your far left lane  
Take left on Democracy Boulevard  
The Bolger Center will be on your left hand side in approximately 5 miles  
Follow signage to guest registration



## **Directions from Union Station Metro Station**

Take Massachusetts Avenue West toward Washington D.C  
Look for signs for 495, toward the end of Massachusetts Avenue  
Bear Right onto 495 North  
From 495 take exit 39, River Road (route 190 west)  
Continue on River Road until you reach Falls Road; make a Right onto Fall Road  
Continue on Falls Road, at the next light make a Right onto Democracy Blvd.  
Follow Democracy Blvd. until Newbridge Drive, make a Right on Newbridge  
Take the 1<sup>st</sup> Right into William F. Bolger Center

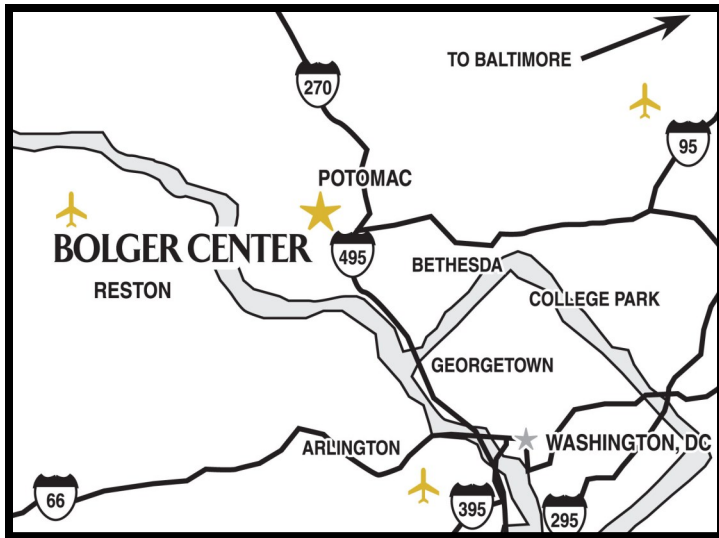
## **Directions from Bethesda Metro Station**

Follow signs to Old Georgetown Road North (Route 187)  
Take a left onto Democracy Blvd.  
Continue 4 miles on Democracy Blvd, make a Left on Newbridge Drive  
Take the 1<sup>st</sup> Right into William F. Bolger Center

## **Directions from L'Efant Plaza Metro Station**

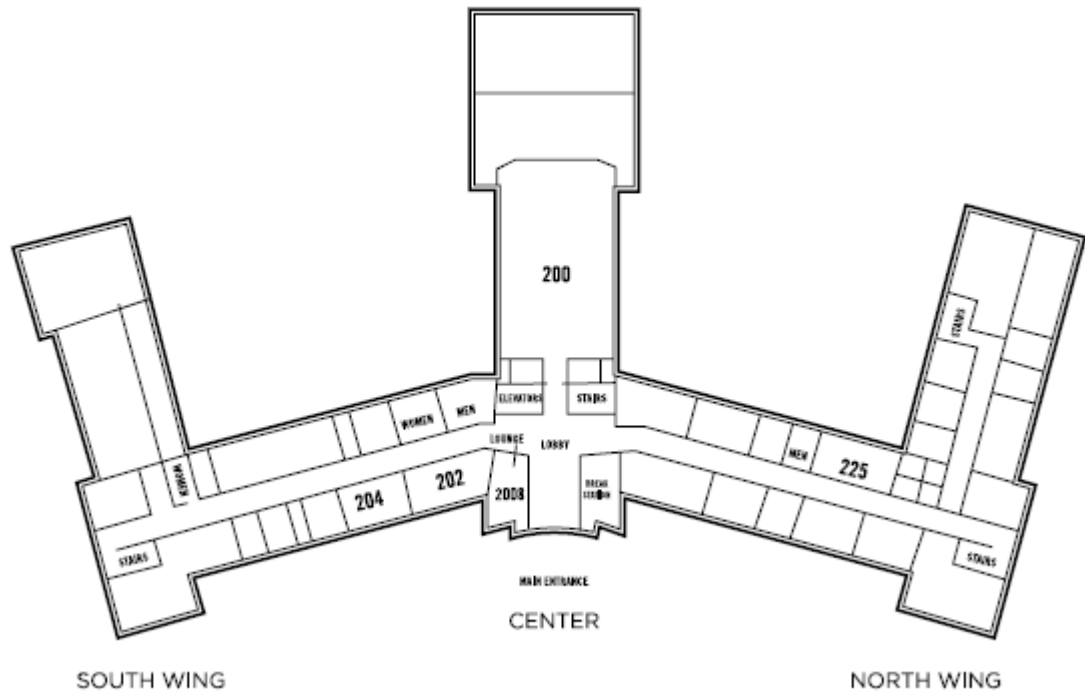
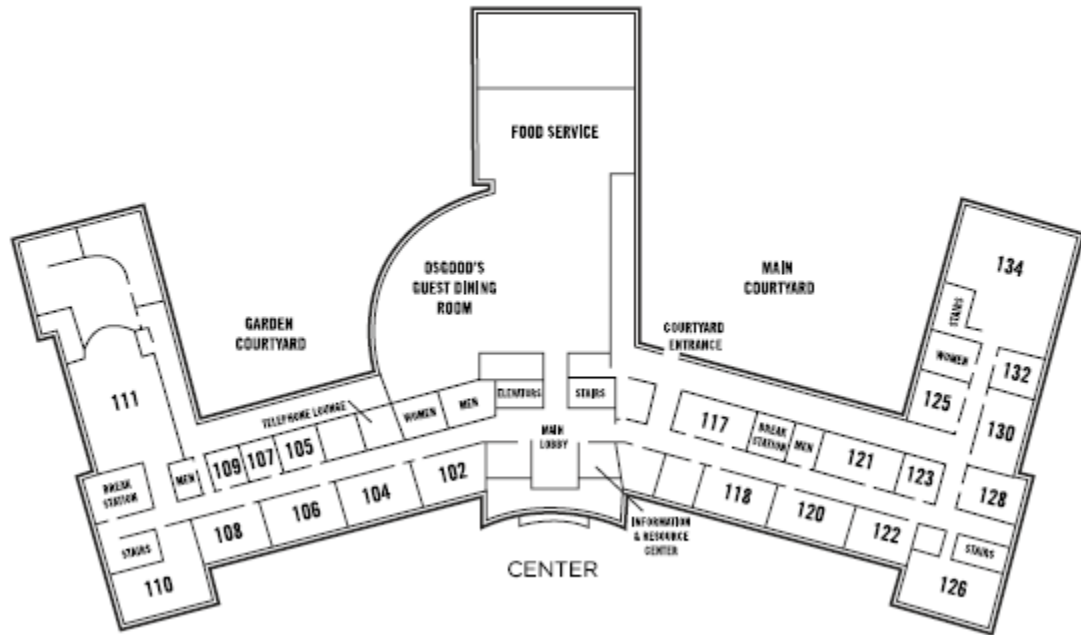
Take 395 South (14<sup>th</sup> Street Bridge), to G.W. Parkway (West)  
Look for signs for 495, toward the end of the parkway  
Bear Right onto 495 North  
From 495 take exit 39, River Road (route 190 west)  
Continue on River Road until you reach Falls Road; make a Right onto Fall Road  
Continue on Falls Road, at the next light make a Right onto Democracy Blvd.  
Follow Democracy Blvd. until Newbridge Drive, make a Right on Newbridge  
Take the 1<sup>st</sup> Right into William F. Bolger Center

# AREA MAPS



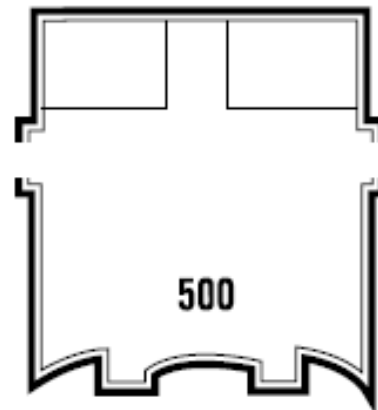
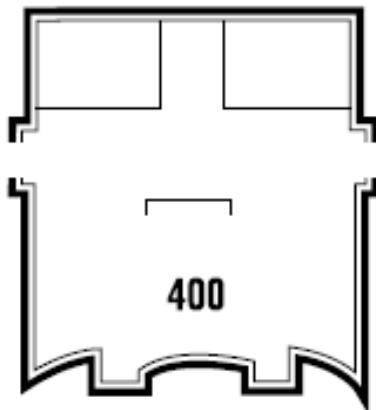
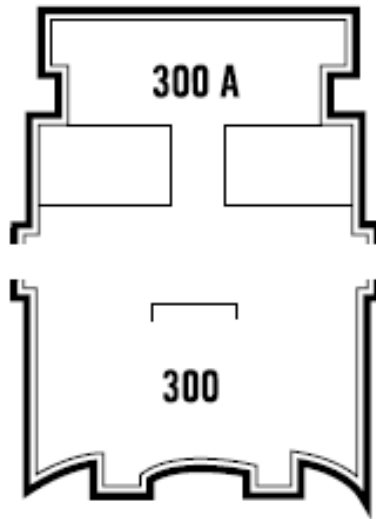
# BUILDING MAPS

## Osgood Building



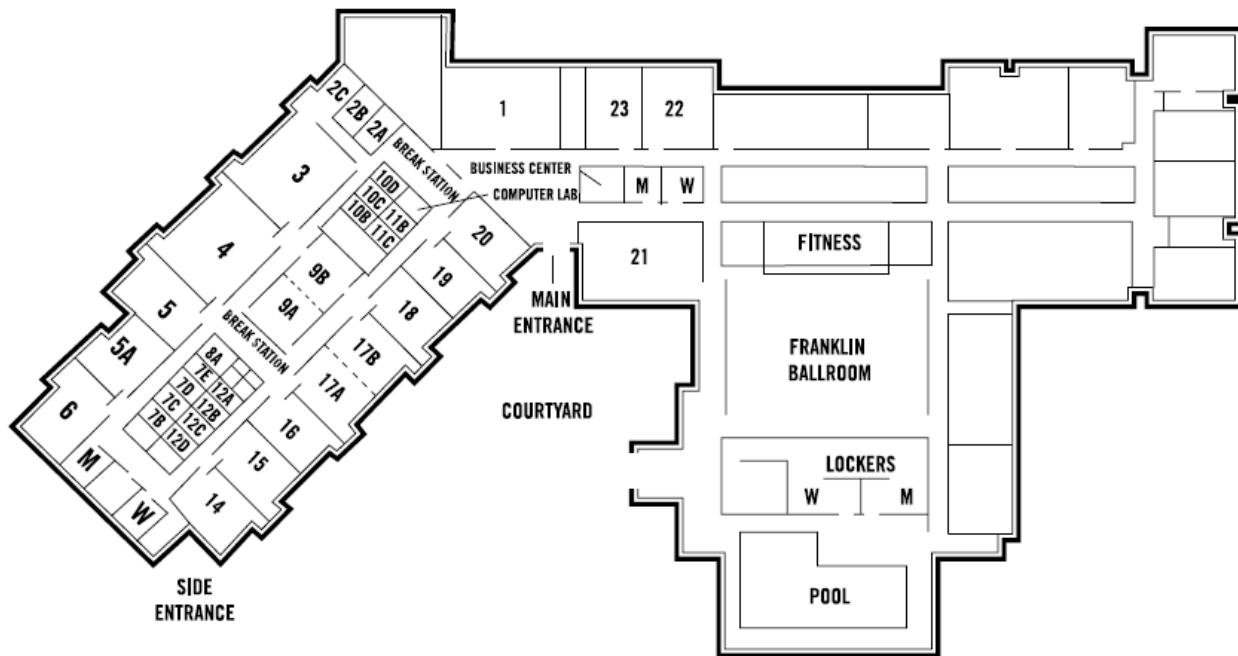
# BUILDING MAPS

## Osgood Building

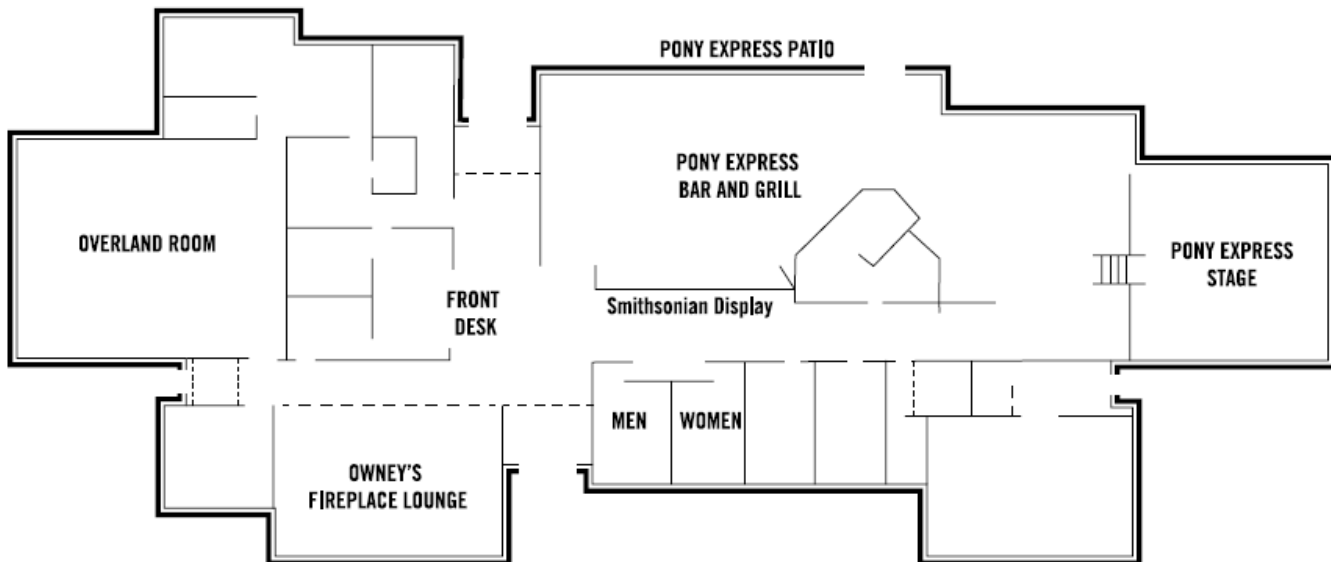


# BUILDING MAPS

## Franklin Building



## Hotel Check In



# SHUTTLE SCHEDULE



## BOLGER CENTER SHUTTLE SCHEDULE

Complimentary service to Montgomery Mall, CVS, and the Bethesda Metro Station

### SHUTTLE PICK UP AND DROP OFF LOCATIONS:

**Montgomery Mall:** "Sear Merchandising". Please wait outside the merchandise pick up entrance

**Bethesda Metro Stop :** Come up the escalator and exit diagonal to the left. Please wait by the Dunkin Donuts.

### Monday Thru Friday

\* The Bolger Center reserves the right to suspend/ alter service based on low hotel occupancies. Please call ahead to confirm the schedule for your travel needs

<b>BOLGER CENTER</b>	<b>CVS</b>	<b>BETHESDA METRO</b>		<b>CVS</b>	<b>MONTGOMERY MALL</b>		<b>BOLGER CENTER</b>
Hotel Check In Bldg		Dunkin Donuts			Sears Merchandise		Hotel Check In Bldg
Depart	Drop Off	ARRIVE	DEPART	Pick Up	ARRIVE	DEPART	ARRIVE
5:00pm	-----	*5:25pm	5:30pm	-----	5:50pm	5:55pm	6:05pm
6:10pm	-----	*6:35pm	6:40pm	-----	7:00pm	7:05pm	7:15pm
7:45pm	8:05pm	*8:10pm	8:15pm	8:20pm	8:40pm	8:45pm	8:55pm
9:00pm	-----	*9:20pm	9:25pm	-----	9:30pm	9:35pm	9:45pm
10:05pm	-----	*10:20pm	10:25pm	-----	-----	-----	10:45pm
11:05pm	-----	*11:25pm	11:30pm	-----	-----	-----	11:50pm

### Saturday and Sunday

\* The Bolger Center reserves the right to suspend/ alter service based on low hotel occupancies. Please call ahead to confirm the schedule for your travel needs

<b>BOLGER CENTER</b>	<b>CVS</b>	<b>BETHESDA METRO</b>		<b>CVS</b>	<b>MONTGOMERY MALL</b>		<b>BOLGER CENTER</b>
Hotel Check In Bldg		Dunkin Donuts			Sears Merchandise		Hotel Check In Bldg
Depart	Drop Off	ARRIVE	DEPART	Pick Up	ARRIVE	DEPART	ARRIVE
10:30am	10:50am	*10:55am	11:00am	11:05am	11:25am	11:30am	11:40am
11:45am	-----	*12:05pm	12:10pm	-----	12:30pm	12:35pm	12:45pm
1:15pm	-----	*1:25pm	1:30pm	-----	1:50pm	1:55pm	2:05pm
2:10pm	-----	*2:30pm	2:35pm	-----	2:55pm	3:00pm	3:10pm
3:15pm	-----	*3:35pm	3:40pm	-----	4:00pm	4:05pm	4:15pm
4:20pm	-----	*4:40pm	4:45pm	-----	5:05pm	5:10pm	5:20pm
5:25pm	-----	*5:45pm	5:50pm	-----	6:15pm	6:20pm	6:25pm
6:30pm	6:50pm	*6:55pm	7:00pm	7:05pm	7:25pm	7:30pm	7:40pm

***Seats on the complimentary shuttle are given on a first come- first serve basis. No more than thirteen seats are available on one shuttle. The Bolger Center is not responsible for transportation if seats are unavailable for any reason on the shuttle bus. Since safe service is our top priority, this schedule may be affected by weather and traffic.***