



# SDE – CAD Integration for Engineering Designs



GITA'S 20TH ANNUAL  
GIS FOR OIL & GAS PIPELINE  
CONFERENCE & EXHIBITION

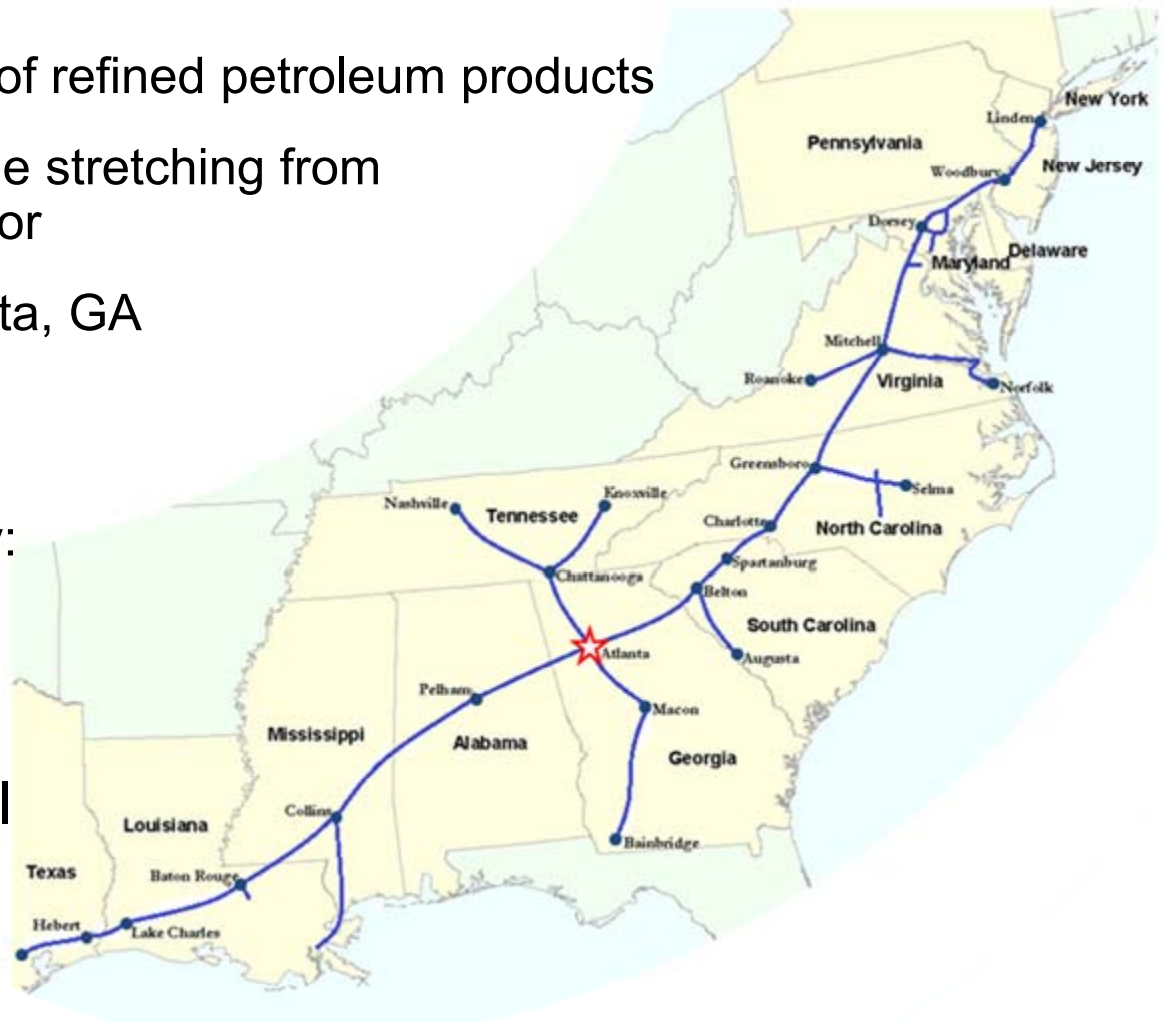
October 24-26, 2011  
Marriott Westchase Hotel Houston, Texas USA





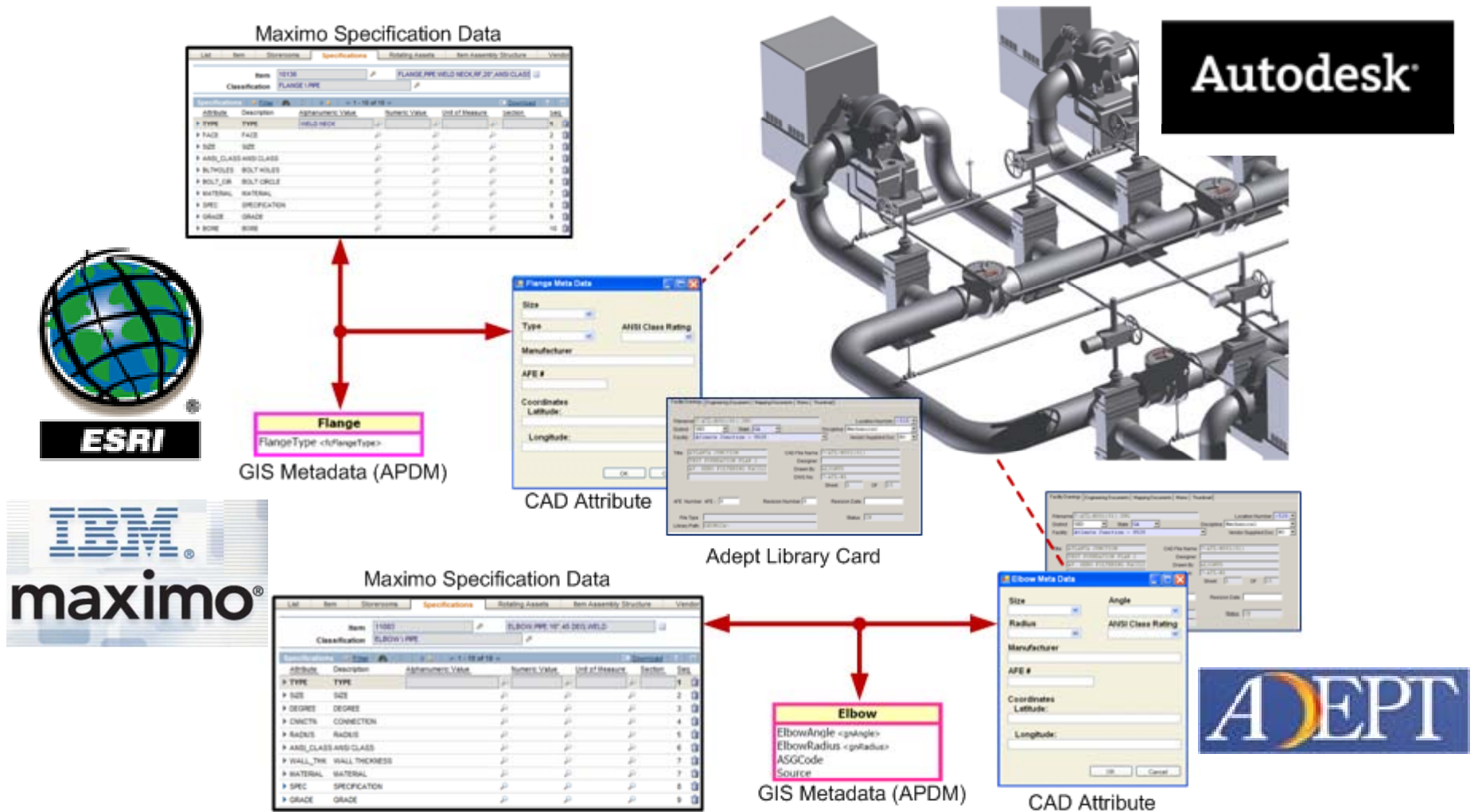
# Colonial Pipeline – Business Overview

- Interstate common carrier of refined petroleum products
- Over 5,500 miles of pipeline stretching from Houston to New York harbor
- Headquartered in Alpharetta, GA
- ~680 employees
- Transports approximately 100 million gallons per day:
  - Gasoline
  - Home heating oil
  - Diesel fuel
  - Commercial jet fuel
  - Military fuels





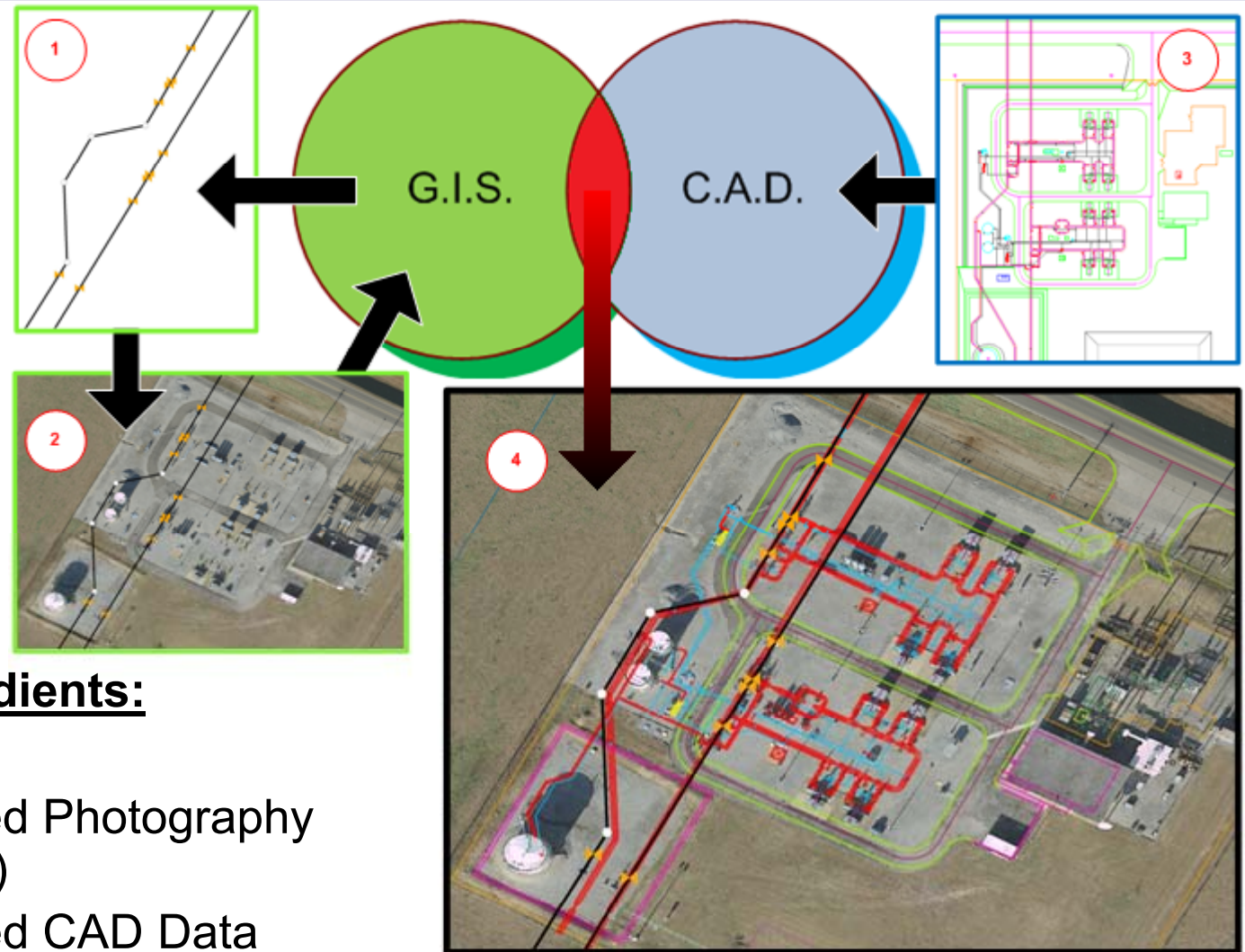
# Colonial Pipeline – Current Challenges



## Data Ownership & Integration



# Phase 1 – Geo-Referenced Datasets



## Integration Ingredients:

1. GIS Data
2. Geo-Referenced Photography (3cm Accuracy)
3. Geo-Referenced CAD Data

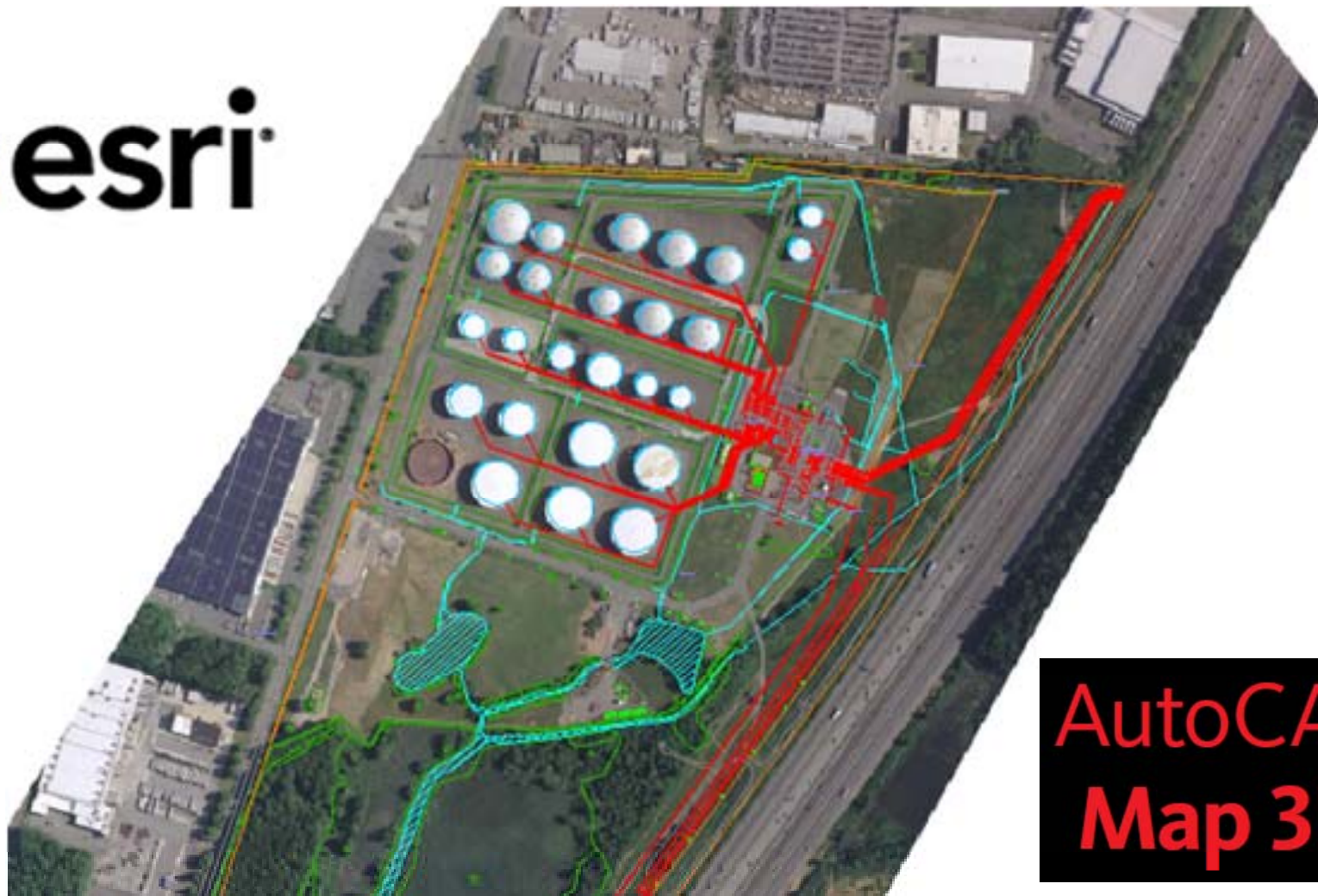


# Integrating the Graphical Components





# Process Demonstration



**AutoCAD  
Map 3D**