

# Carroll County Community Needs Profile

## About Community Needs Index:

The Community Needs Index (CNI) was developed by Dignity Health and Truven Health Analytics to indicate community health care needs based on socio-economic factors. The CNI generates a score to determine areas with the highest need with a scale ranging from 1.0 to 5.0. A score of 1.0 indicates a zip code with the least need, while a score of 5.0 represents a zip code with the most need. The CNI score is derived by taking an average of the five barrier scores. The barriers and statistics that comprised the score are indicated below.

## Income Barrier

- Percentage of households below poverty line, with head of household age 65 or older
- Percentage of families with children under 18 below the poverty line
- Percentage of single, female-headed families with children under age 18 below poverty line

## Cultural Barrier

- Percentage of population that is minority (including Hispanic ethnicity)
- Percentage of population over age 5 that speaks English poorly or not at all (limited English proficiency)

## Education Barrier

- Percentage of population over 25 without a high school diploma

## Insurance Barrier

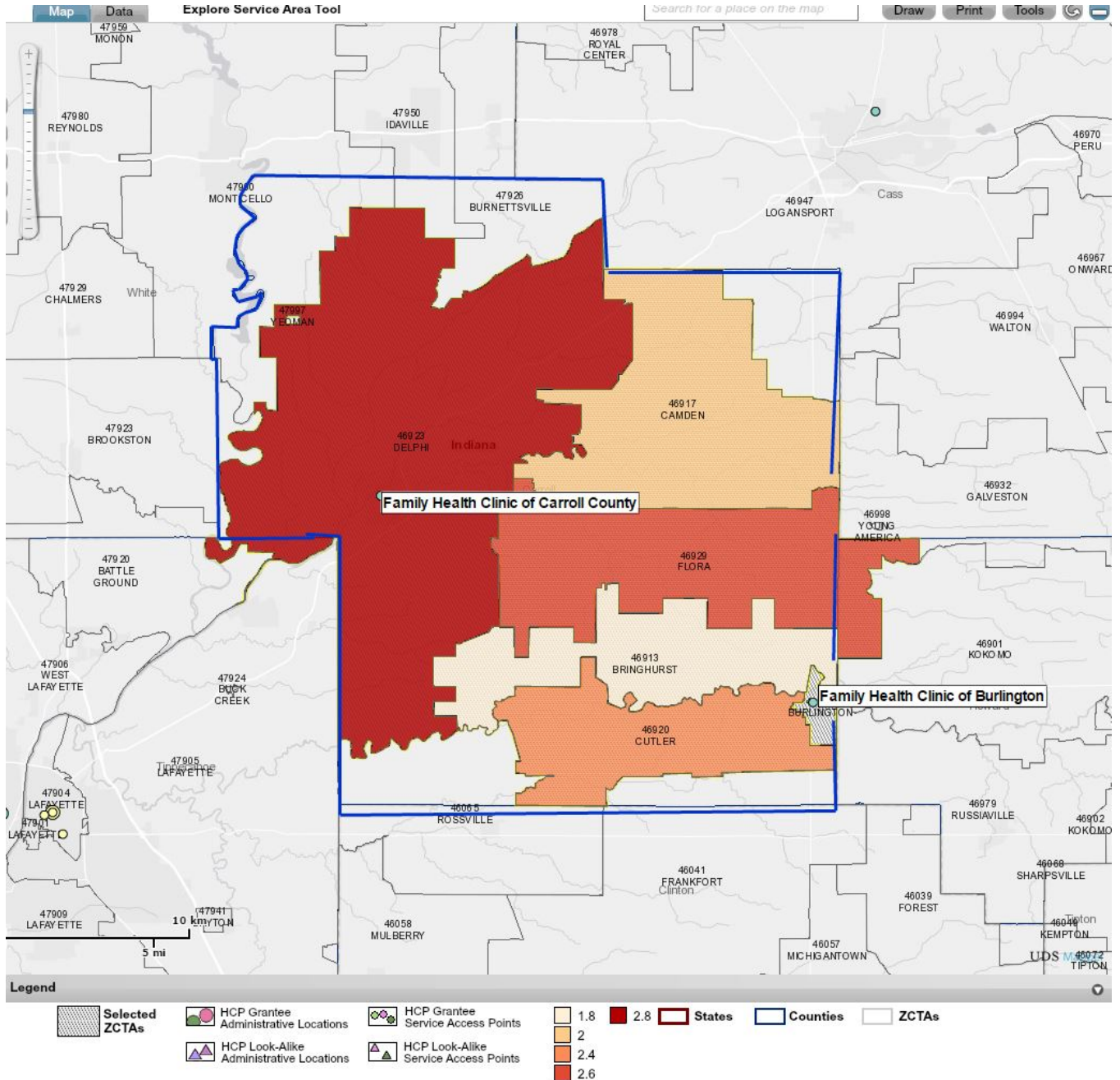
- Percentage of population in the labor force, aged 16 or more, without employment
- Percentage of population without health insurance

## Housing Barrier

- Percentage of households renting their home.

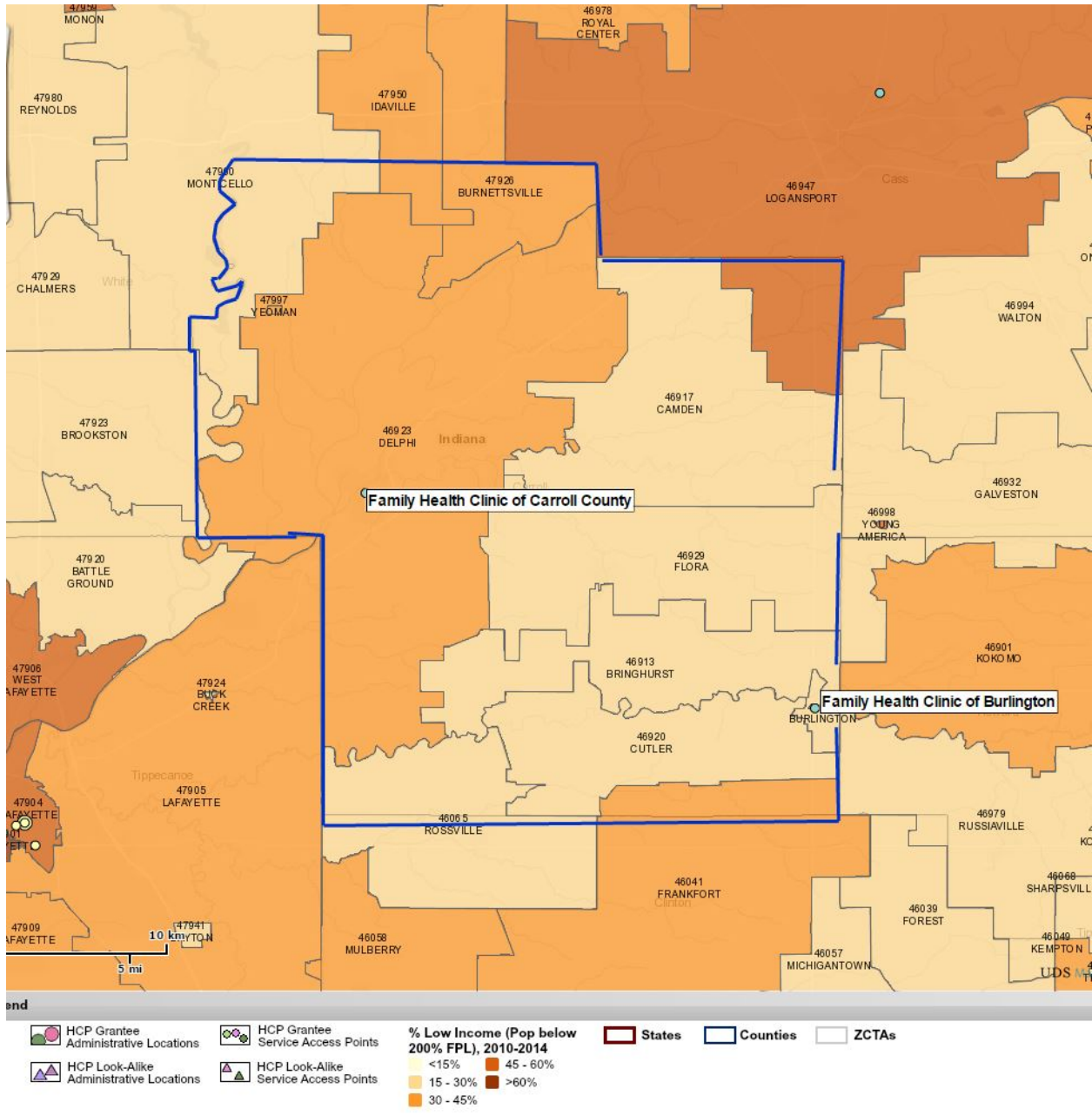
## Community Needs Index Score

The maps below shows the areas of highest need for Carroll County, IN as well as FQHCs located within the county. A score of 1.0 indicates a zip code with the least need, while a score of 5.0 represents a zip code with the most need. Darker areas represent higher CNI scores and indicate greater need.



Source: Truven Health Analytics, 2015; Insurance Coverage Estimates, 2015; The Nielson Company, 2015; and Community Need Index, 2015.

## Low Income Residents Map (Number of Residents)



Source: UDS Mapper

## Zip Code Level Statistics

Below is a table of demographic and economic characteristics for the zip codes within Carroll County. This information is useful in pinpointing certain zip codes that may need special outreach efforts by local health centers.

Income Barrier Measures		
ZCTA	% Pop in Poverty, 10-14	% Low-Income Pop, 10-14
46929	7.4%	29.1%
46917	7.7%	27.3%
46920	16.1%	21.9%
46913	5.8%	19.7%
46915	5.0%	25.5%
46923	11.9%	37.7%

Cultural Barrier Measures					
ZCTA	% Hispanic, 10-14	% Black, 10-14	% Asian, 10-14	% American Indian/Alaska Native, 10-14	% Households with Limited English Proficiency, 10-14
46929	1.0%	0.2%	0.0%	0.0%	0.0%
46917	0.4%	0.0%	0.0%	0.0%	0.3%
46920	8.2%	0.0%	0.0%	0.0%	0.0%
46913	2.2%	0.0%	0.0%	0.0%	0.0%
46915	3.3%	2.6%	3.3%	0.0%	3.6%
46923	7.6%	0.5%	0.1%	0.3%	4.7%

<b>Education Barrier Measures</b>	
<b>ZCTA</b>	<b>% Pop with Less Than High School Education, 10-14</b>
46929	11.6%
46917	11.8%
46920	8.4%
46913	13.1%
46915	10.6%
46923	16.3%

<b>Insurance Barrier</b>		
<b>ZCTA</b>	<b>% Pop Not Employed, 10-14</b>	<b>% Population Uninsured, est. 2014</b>
46929	42.9%	12.2%
46917	36.3%	10.7%
46920	35.7%	10.1%
46913	36.6%	11.2%
46915	45.2%	10.6%
46923	42.7%	11.6%

<b>Housing Barrier (2010 Census)</b>	
<b>ZCTA</b>	<b>% Renter Occupied Housing Units</b>
46929	25.60%
46917	16.60%
46920	14.40%
46913	9.90%
46915	22.10%
46923	23.30%