

Clark County Community Needs Profile

About Community Needs Index:

The Community Needs Index (CNI) was developed by Dignity Health and Truven Health Analytics to indicate community health care needs based on socio-economic factors. The CNI generates a score to determine areas with the highest need with a scale ranging from 1.0 to 5.0. A score of 1.0 indicates a zip code with the least need, while a score of 5.0 represents a zip code with the most need. The CNI score is derived by taking an average of the five barrier scores. The barriers and statistics that comprised the score are indicated below.

Income Barrier

- Percentage of households below poverty line, with head of household age 65 or older
- Percentage of families with children under 18 below the poverty line
- Percentage of single, female-headed families with children under age 18 below poverty line

Cultural Barrier

- Percentage of population that is minority (including Hispanic ethnicity)
- Percentage of population over age 5 that speaks English poorly or not at all (limited English proficiency)

Education Barrier

- Percentage of population over 25 without a high school diploma

Insurance Barrier

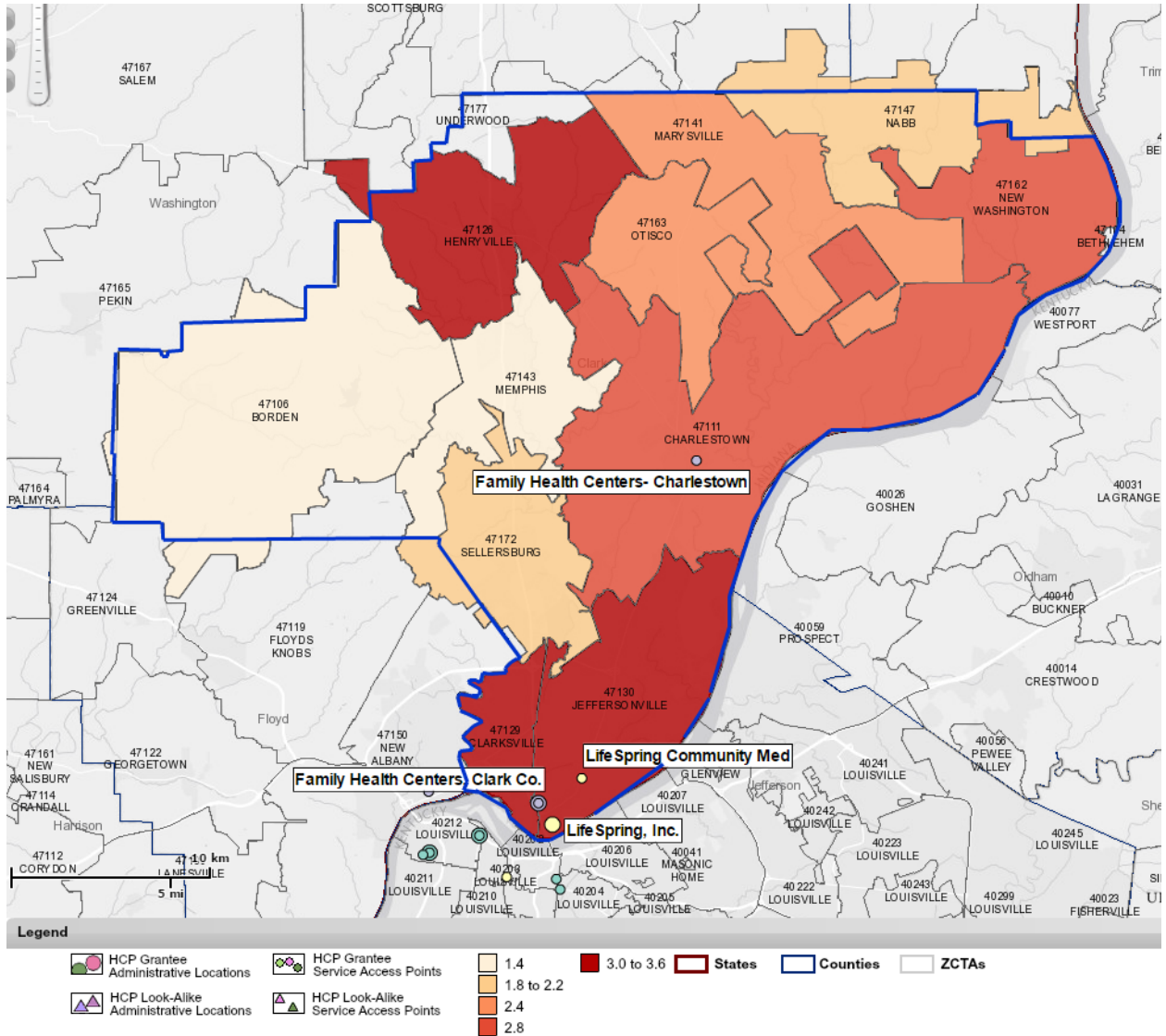
- Percentage of population in the labor force, aged 16 or more, without employment
- Percentage of population without health insurance

Housing Barrier

- Percentage of households renting their home.

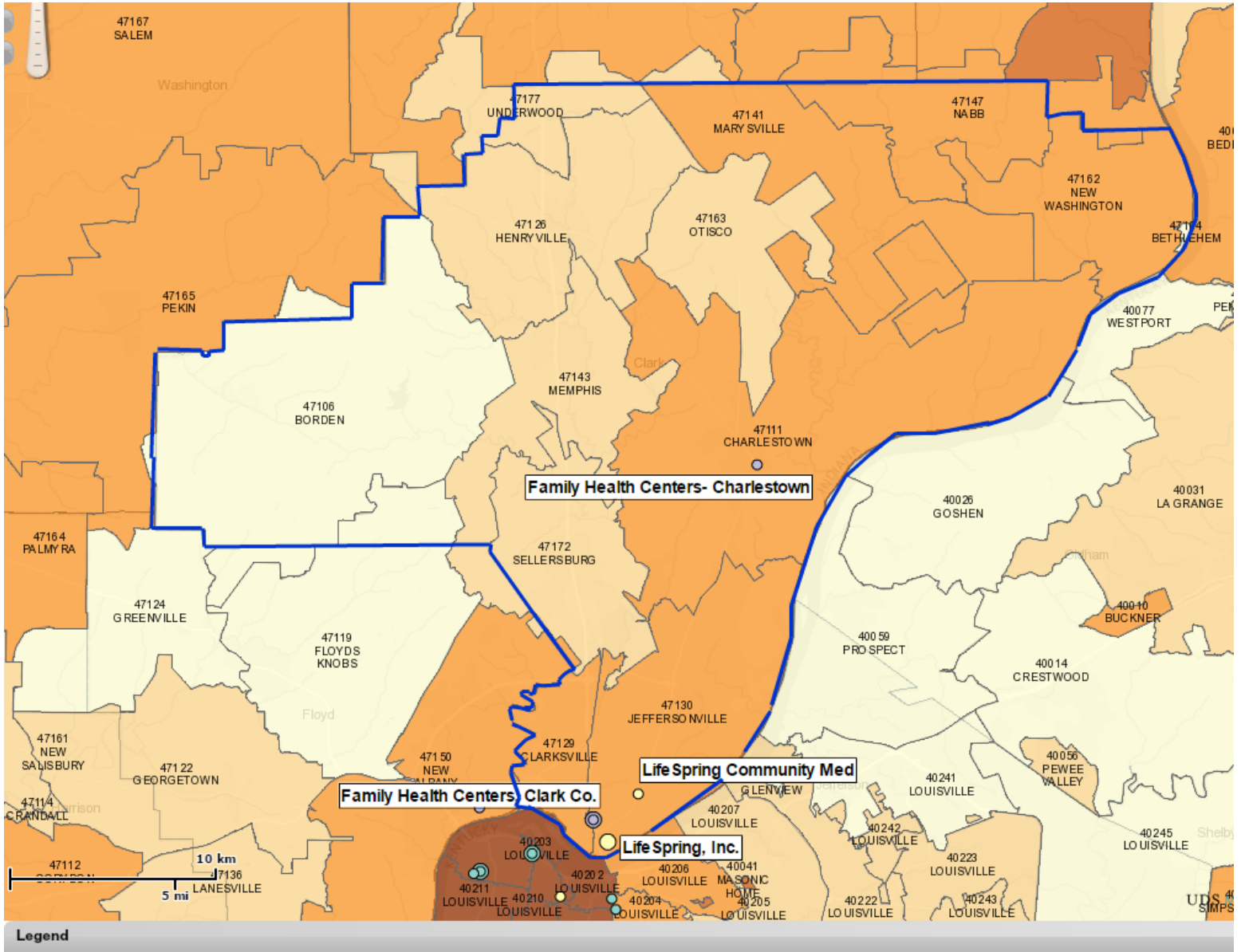
Community Needs Index Score- Clark County

The maps below shows the areas of highest need for Clark County, IN as well as FQHCs located within the county. A score of 1.0 indicates a zip code with the least need, while a score of 5.0 represents a zip code with the most need. Darker areas represent higher CNI scores and indicate greater need.



Source: Truven Health Analytics, 2015; Insurance Coverage Estimates, 2015; The Nielson Company, 2015; and Community Need Index, 2015.

Low Income Residents Map (Number of Residents)



Source: UDS Mapper

Zip Code Level Statistics

Below is a table of demographic and economic characteristics for the zip codes within Clark County. This information is useful in pinpointing certain zip codes that may need special outreach efforts by local health centers.

Income Barrier Measures		
ZCTA	% Pop in Poverty, 11-15	% Low-Income Pop, 11-15
47111	11.6%	32.8%
47126	14.5%	29.0%
47106	4.1%	11.4%
47129	12.6%	39.0%
47130	11.6%	32.2%
47141	13.8%	36.3%
47143	10.8%	17.8%
47147	19.4%	36.9%
47162	17.2%	35.5%
47163	8.5%	21.5%
47172	5.8%	17.5%

Cultural Barrier Measures					
ZCTA	% Hispanic, 11-15	% Black, 11-15	% Asian, 11-15	% American Indian/Alaska Native, 11-15	% Households with Limited English Proficiency, 11-15
47111	7.5%	2.1%	0.1%	0.0%	2.0%
47126	0.0%	0.9%	0.0%	0.0%	0.0%
47106	1.0%	0.0%	0.0%	0.0%	0.2%
47129	10.0%	4.5%	0.3%	0.4%	2.2%
47130	4.1%	14.3%	1.7%	0.1%	0.5%
47141	0.0%	0.0%	0.0%	0.0%	2.3%
47143	3.9%	0.0%	0.0%	0.0%	0.0%
47147	4.1%	0.0%	0.0%	0.0%	0.0%
47162	0.0%	0.0%	0.0%	0.0%	0.0%
47163	0.0%	1.0%	0.0%	0.0%	0.0%
47172	3.2%	1.3%	0.9%	0.1%	0.0%

Education Barrier Measure	
ZCTA	% Pop with Less Than High School Education, 11-15
47111	13.6%
47126	16.2%
47106	13.1%
47129	18.0%
47130	11.4%
47141	18.6%
47143	8.4%
47147	7.9%
47162	11.9%
47163	17.3%
47172	7.8%

Insurance Barrier Measures		
ZCTA	% Population Uninsured, est. 2015	% Pop Not Employed, 11-15
47111	8.6%	38.4%
47126	7.4%	45.7%
47106	5.8%	32.1%
47129	10.0%	41.3%
47130	8.6%	39.5%
47141	8.2%	46.8%
47143	6.0%	39.9%
47147	8.3%	38.1%
47162	8.2%	37.2%
47163	8.0%	41.7%
47172	5.7%	31.9%

Housing Barrier (2010 Census)	
ZCTA	% Renter Occupied Housing
47111	25%
47126	20.20%
47106	14.50%
47129	44.10%
47130	33.40%
47141	11.60%
47143	13%
47147	15.40%
47162	17.50%
47163	10.10%
47172	16.80%