

## Starke County Community Need Profile

### About Community Needs Index:

The Community Needs Index (CNI) was developed by Dignity Health and Truven Health Analytics to indicate community health care needs based on socio-economic factors. The CNI generates a score to determine areas with the highest need with a scale ranging from 1.0 to 5.0. A score of 1.0 indicates a zip code with the least need, while a score of 5.0 represents a zip code with the most need. The CNI score is derived by taking an average of the five barrier scores. The barriers and statistics that comprised the score are indicated below.

### Income Barrier

- Percentage of households below poverty line, with head of household age 65 or older
- Percentage of families with children under 18 below the poverty line
- Percentage of single, female-headed families with children under age 18 below poverty line

### Cultural Barrier

- Percentage of population that is minority (including Hispanic ethnicity)
- Percentage of population over age 5 that speaks English poorly or not at all (limited English proficiency)

### Education Barrier

- Percentage of population over 25 without a high school diploma

### Insurance Barrier

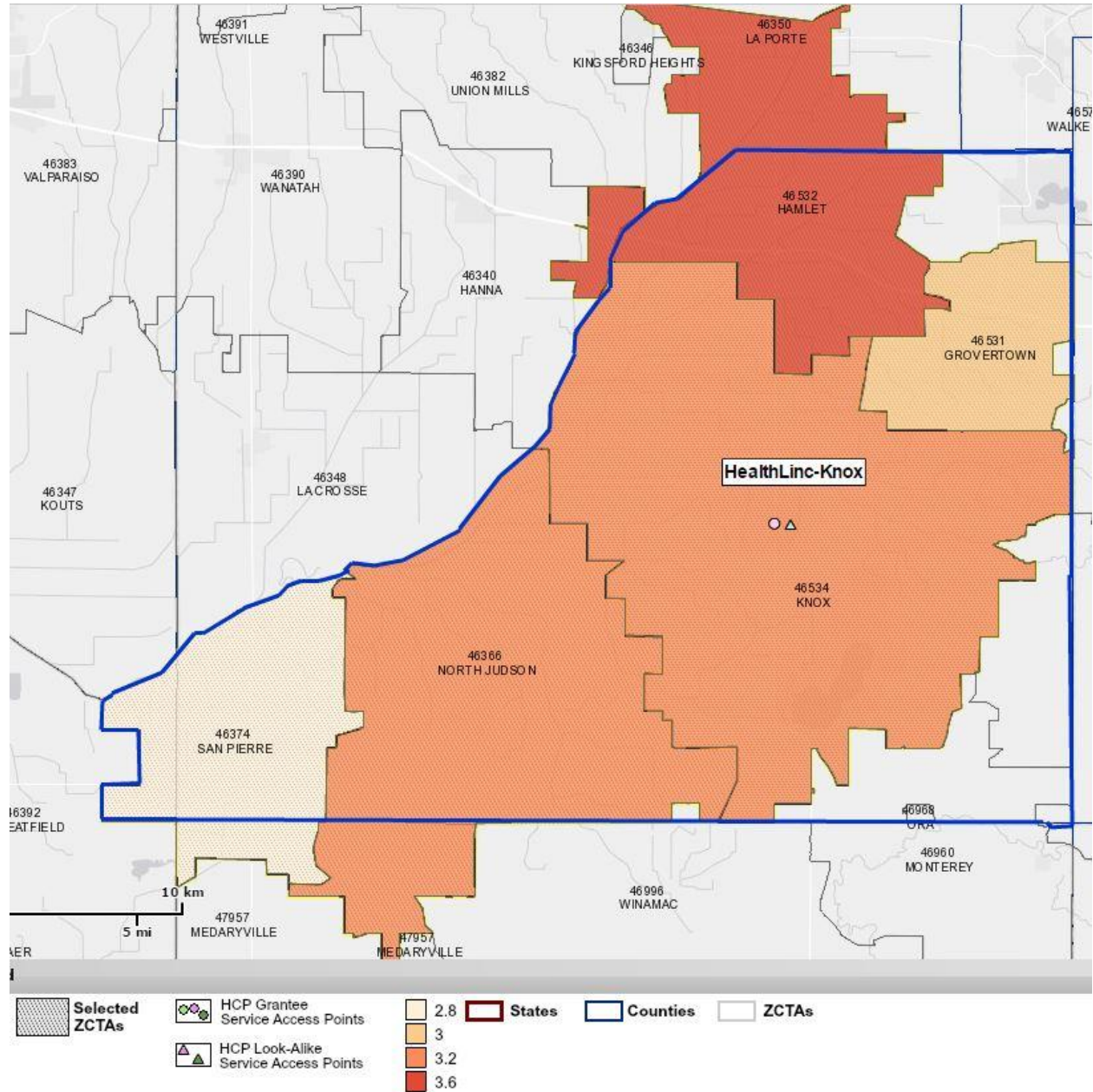
- Percentage of population in the labor force, aged 16 or more, without employment
- Percentage of population without health insurance

### Housing Barrier

- Percentage of households renting their home.

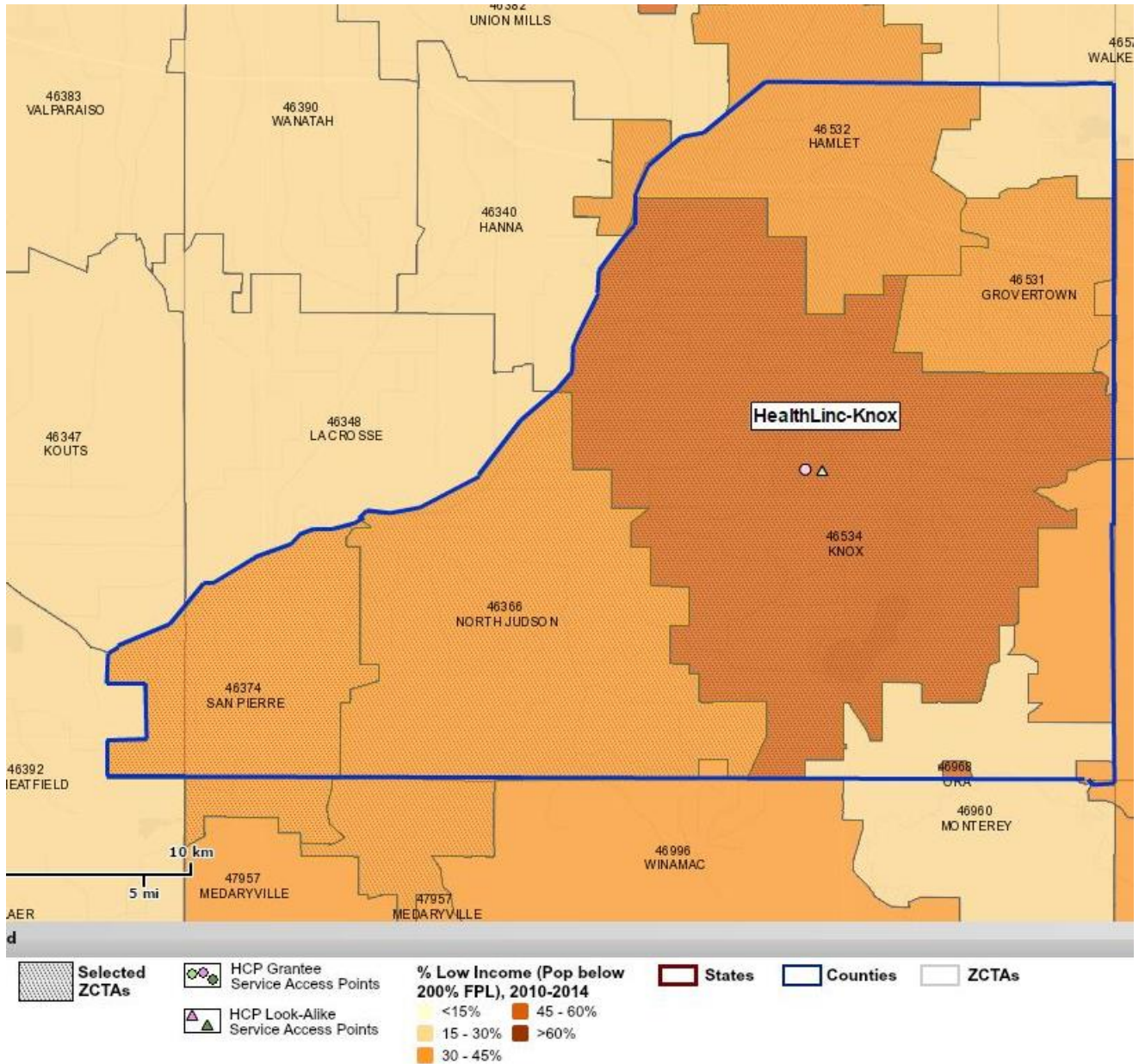
## Community Needs Index Score: Starke County.

The maps below shows the areas of highest need for Starke County, IN as well as FQHCs and Look-Alikes located within the county. A score of 1.0 indicates a zip code with the least need, while a score of 5.0 represents a zip code with the most need. Darker areas represent higher CNI scores and indicate greater need.



Source: Truven Health Analytics, 2015; Insurance Coverage Estimates, 2015; The Nielson Company, 2015; and Community Need Index, 2015.

## Low Income Residents Map



Source: UDS Mapper

## Zip Code Level Statistics

Below is a table of demographic and economic characteristics for Starke County. This information is useful in pinpointing certain zip codes that may need special outreach efforts by local health centers.

<b>Income Barrier Measures (2014 UDS)</b>		
<b>ZCTA</b>	<b>% Pop in Poverty, 10-14</b>	<b>% Low-Income Pop, 10-14</b>
46366	21.9%	43.2%
46374	15.7%	36.5%
46531	18.0%	38.4%
46532	14.8%	40.2%
46534	15.6%	46.5%

<b>Cultural Barrier Measures (2014 UDS)</b>					
<b>ZCTA</b>	<b>% Hispanic, 10-14</b>	<b>% Black, 10-14</b>	<b>% Asian, 10-14</b>	<b>% American Indian/Alaska Native, 10-14</b>	<b>% Pop with Limited English Proficiency, 09-13</b>
46366	5.2%	0.8%	0.6%	0.1%	0.5%
46374	0.0%	0.0%	4.9%	0.0%	0.0%
46531	4.1%	0.0%	0.0%	0.0%	0.0%
46532	1.0%	0.0%	0.0%	0.7%	0.0%
46534	3.2%	0.1%	0.1%	0.0%	0.4%

<b>Education Barrier Measures</b>	
<b>ZCTA</b>	<b>% Pop with Less Than High School Education, 09-13</b>
46366	18.1%
46374	12.1%
46531	26.5%
46532	17.3%
46534	16.7%

<b>Insurance Barrier Measures</b>		
<b>ZCTA</b>	<b>% Population Uninsured, est. 2014</b>	<b>% Pop Not Employed, 09-13</b>
46366	14.0%	51.9%
46374	13.3%	52.0%
46531	13.3%	49.0%
46532	12.0%	52.0%
46534	14.1%	51.6%

<b>Housing Barrier (2010 Census)</b>	
<b>ZCTA</b>	<b>% Renter Occupied Housing Units</b>
46366	20.40%
46374	15.20%
46531	15.10%
46532	20.70%
46534	22.20%