

FROM PALLETS TO PUPPIES

Using Logistics and Distribution Principles to Increase Adoptions



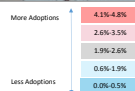
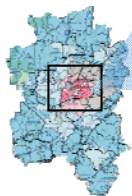


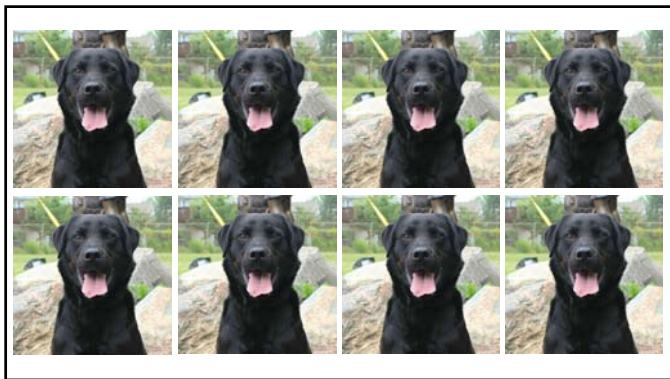
Shorter Length of Stay = More Lives Saved

GOAL

For available animals to spend as little time on the adoption floor before going home as possible.

10 adoption sites, each with different clientele









**MY OPINIONS
MAY HAVE
CHANGED, BUT
NOT THE FACT
THAT I'M
RIGHT.**

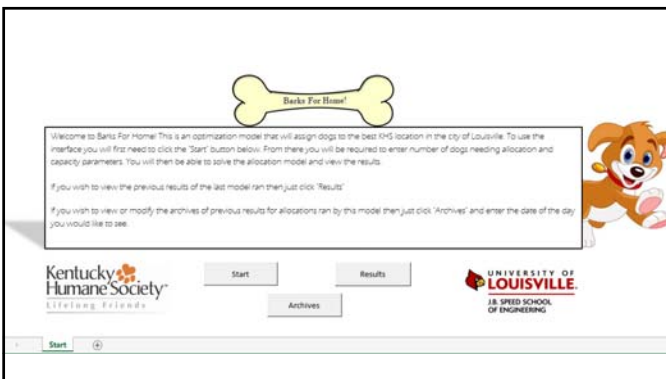
There is a best way to allocate animals



- Out of all the possible configurations, there is ONE correct solution
- The correct solution will produce the lowest number of "In Care Days" on the adoption floor possible.
- If you can allocate animals based on the correct solution every day, then the result will be lower length of stay for all animals and more lives saved.



Same problem, different "product"!



Day Allocation Form

Input Data

Click "Dogs" to input the number of dogs to be sent out

Click "Capacity" to input the number of cages available at each location

Solve Allocation Model

Buttons: Dogs, Capacity, Solve!, Cancel

Kentucky Humane Society
UNIVERSITY OF LOUISVILLE

Input Dogs

Group: Puppies (0 - 4 mos.) Amount: 4

Small

- Small (7 mos - 8 yrs.) 1
- Small (2+ yrs - 7 yrs.) 5
- Small (7+ yrs.) 6

Medium

- Medium (7 mos - 8 yrs.) 4
- Medium (2+ yrs - 7 yrs.) 2
- Medium (7+ yrs.) 1

Large

- Large/Extra-Large (7 mos - 8 yrs.) 3
- Large/Extra-Large (2+ yrs - 7 yrs.) 4
- Large/Extra-Large (7+ yrs.) 4

Buttons: OK, Cancel, Clear

Kentucky Humane Society
UNIVERSITY OF LOUISVILLE

Thought bubble: I need to be allocated!!

Input Cages

Location	Puppy Available Puppy Cages	Small Available Small Cages	Medium Available Medium Cages	Large Available Large Cages
Clarksville	10	1	0	0
Dixie	0	5	5	0
East Campus	3	0	0	7
Fern Creek	0	0	0	4
Hilken Point	1	2	2	0
Pevee Valley	3	0	0	0
Perdon	5	1	1	0
Slively	4	5	0	1
Springhurst	2	0	6	0
St. Matthews	4	2	0	0
TBD	0	0	0	0
TBD	0	0	0	0

Buttons: OK, Cancel, Clear

Kentucky Humane Society
UNIVERSITY OF LOUISVILLE

Thought bubble: I'm getting hungry... Where do you plan on allocating me to from? Don't be mean... Be a family!
