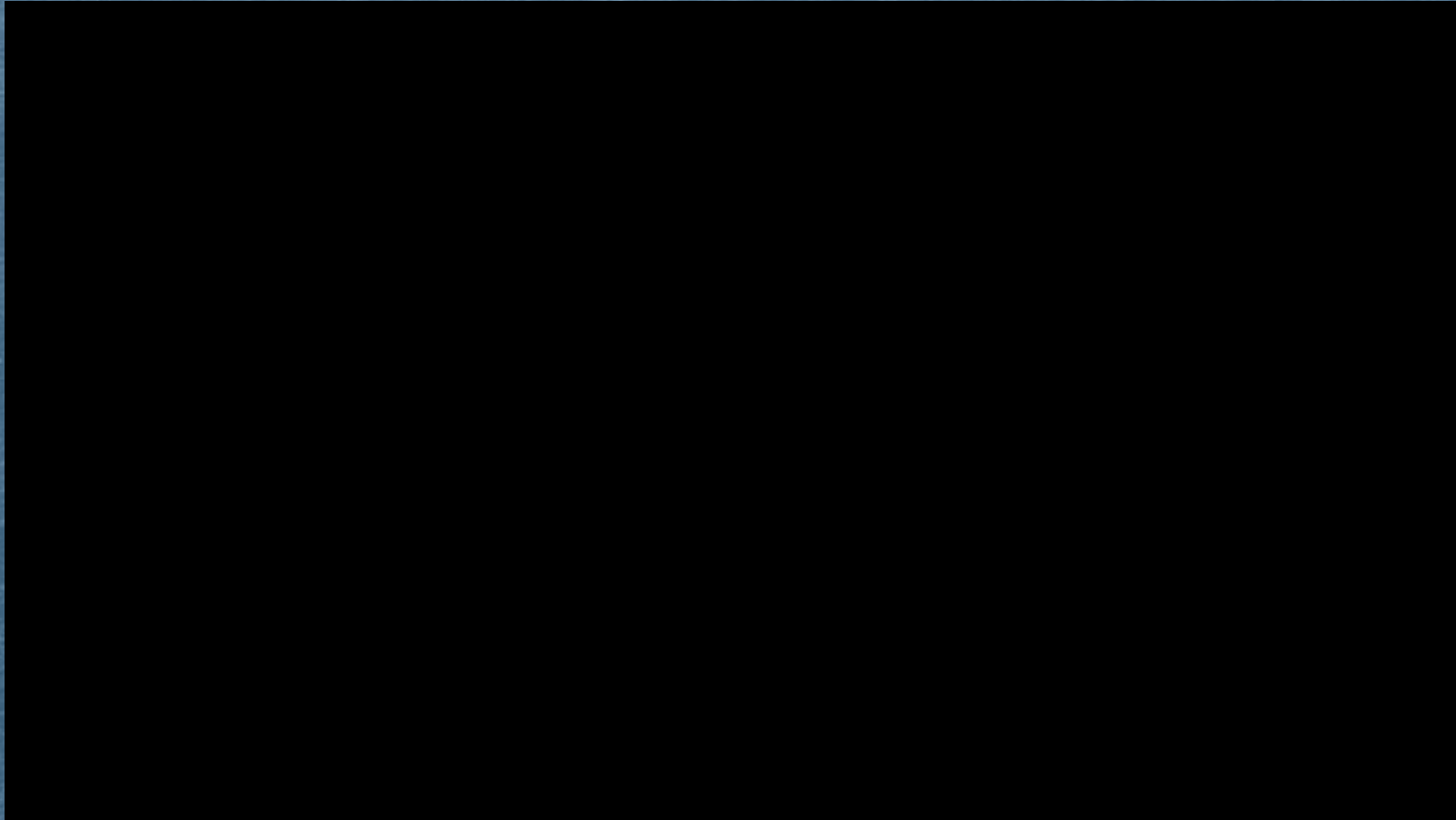


TEMPLE COLLEGE MATH TUTORING LAB



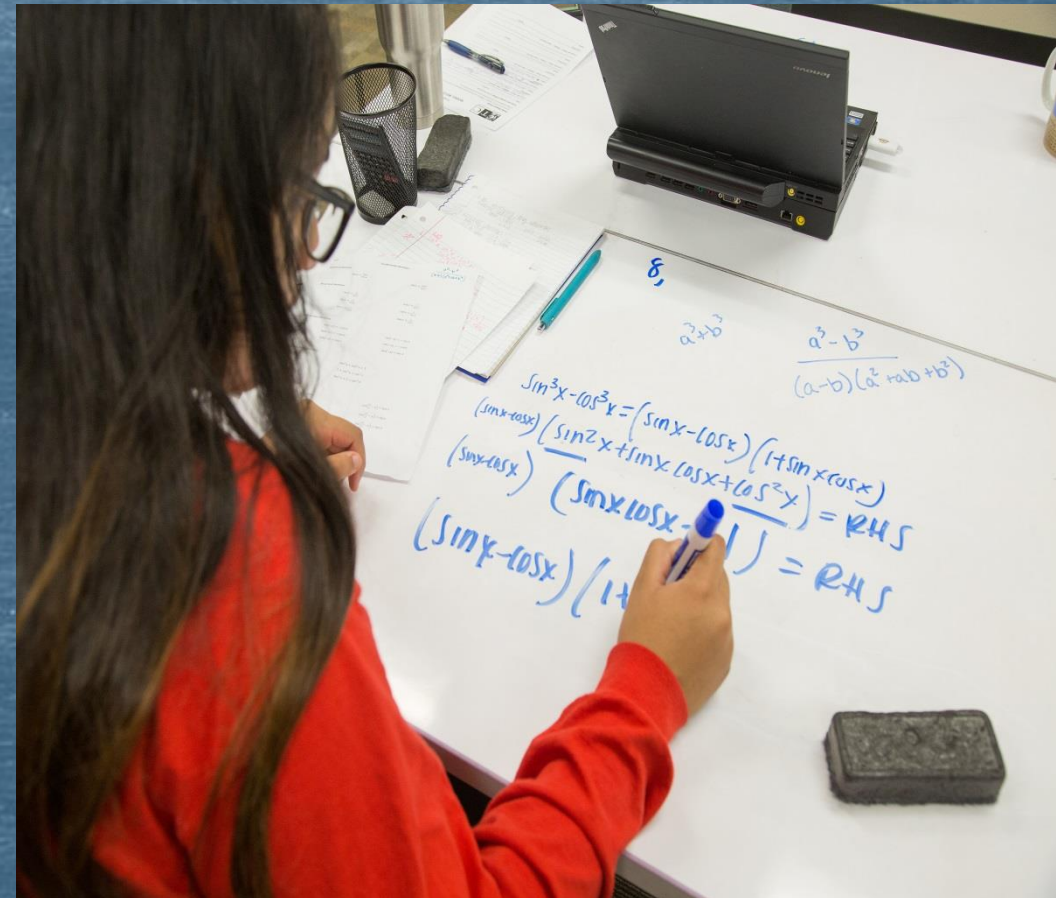
November 2017

Samuel Adam McDonald
Dr. Prudence York-Hammons

Math Tutoring Lab: Past, Present, Future

90's to Mid 2000's

- 1) Why – support for non college ready math students
- 2) Who ran it
- 3) Services offered



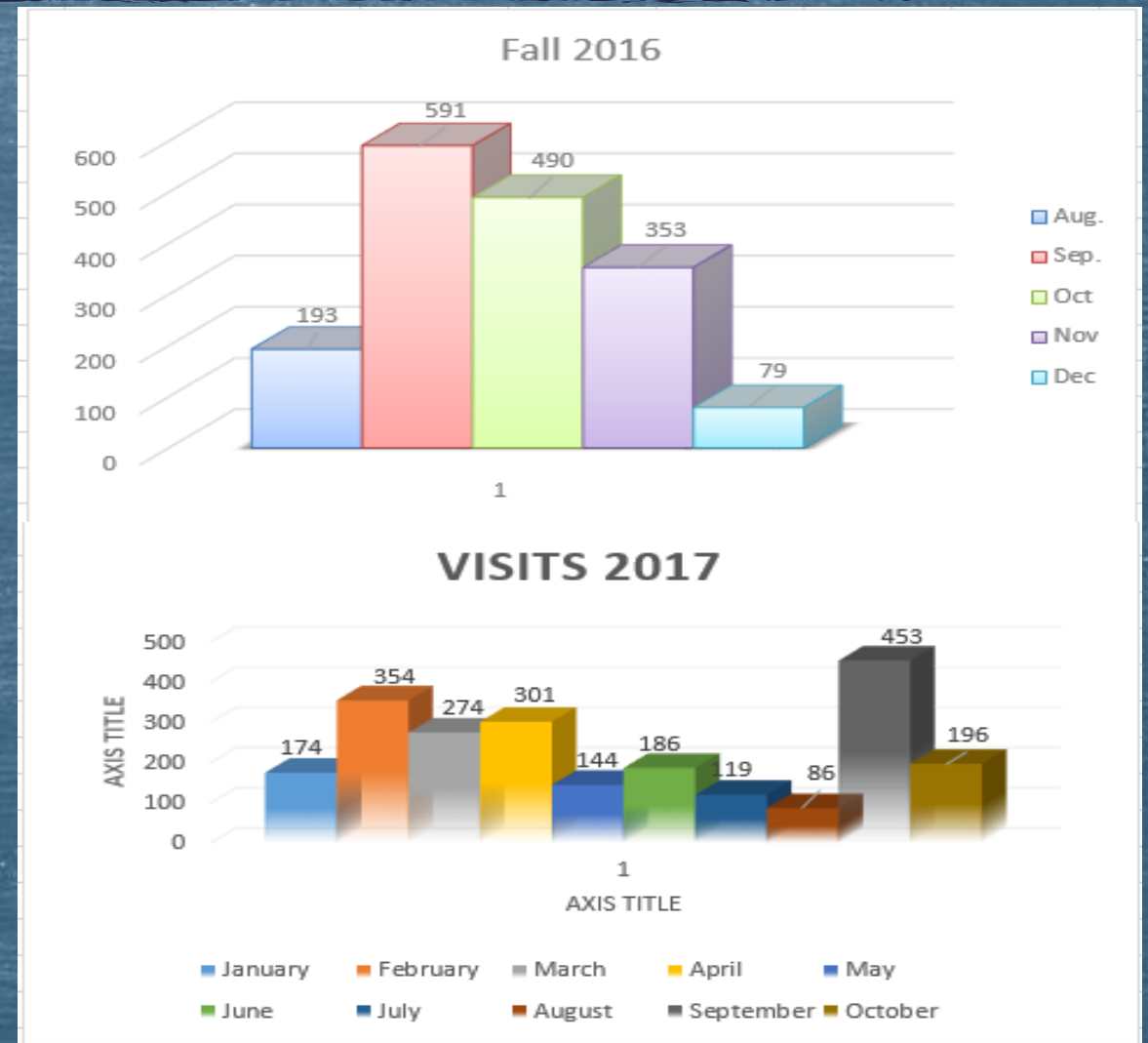
Mid 2000's to 2016

- 1) Who ran it?
- 2) Department and location change
- 3) Services offered
- 4) Resources
- 5) Advertisement



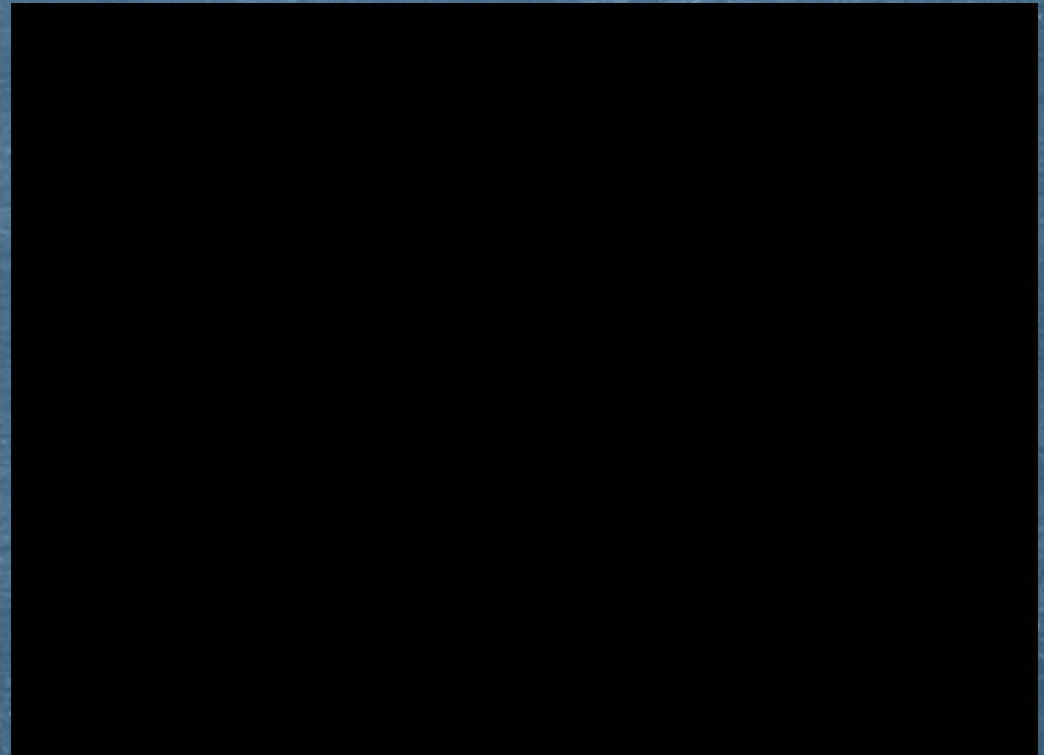
Present(cons)

- 1) Small town not many universities around
 - Lack of student workers
 - Have to use faculty to work
- 2) Decrease enrolment
 - Budgetary constraint
 - Short on staff
 - Hiring ranges
 - Less student visits but feels busier



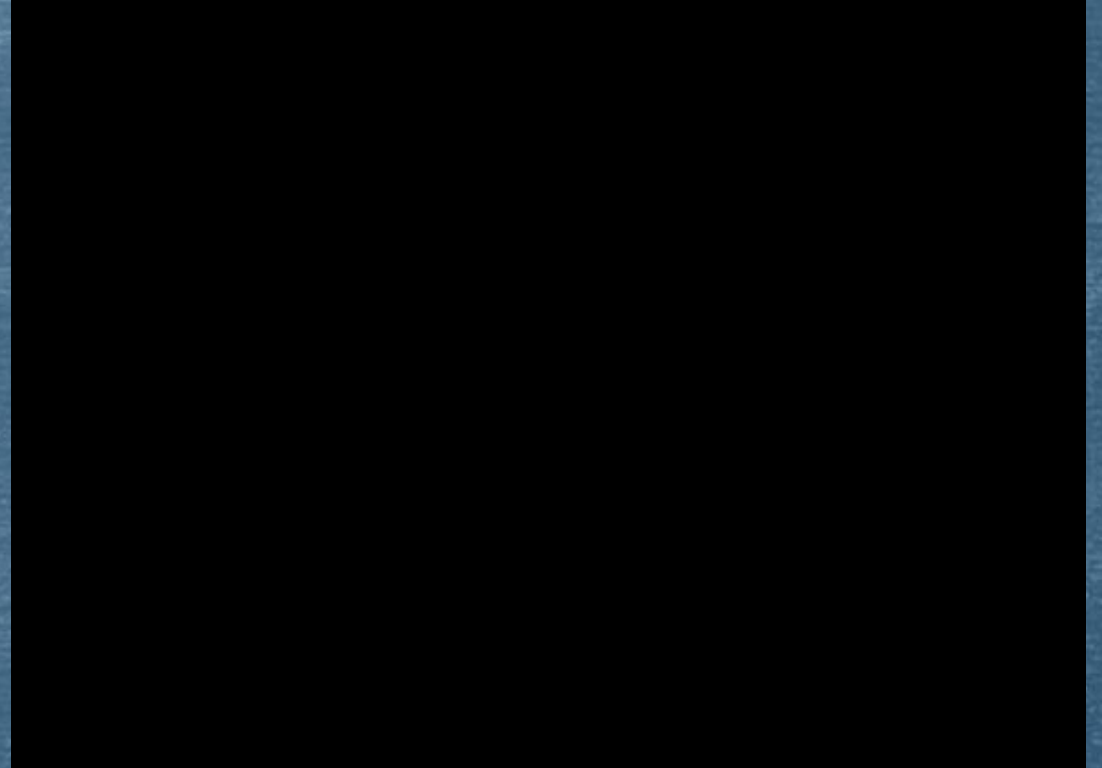
Present(pros)

- 1) Where- bigger space
- 2) Provide services for:
 - Test Prep
 - All math classes – no priority to any classes
 - Science classes with math concepts
- 3) Resources
- 4) Advertising
- 5) Current/Former students working



Future

- 1) Encouraging student success
 - Milestone Pennants students can sign put milestone date on.
 - Increase peer tutors
 - Increase tutoring availability
- 2) Tutor Training
 - Certify tutors
- 3) More feedback from faculty and students



Questions & Discussion

- ▶ Share what you are doing at your campus
- ▶ Advice for campus' starting/improving a math lab

For Questions, Discussions, or Advice you can Contact us at:

- ▶ Samuel.mcdonald@templejc.edu
- ▶ Prudence.yorkhammons@templejc.edu