



Stitch of the Month 2017 - November

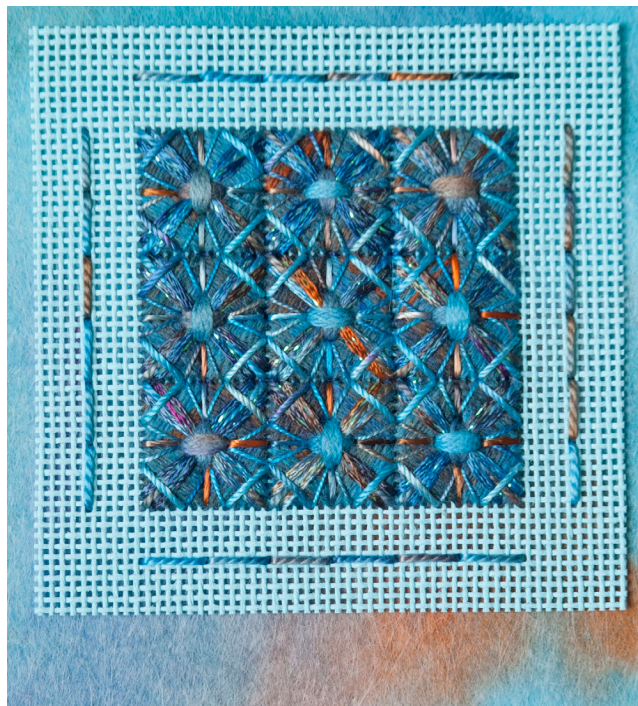
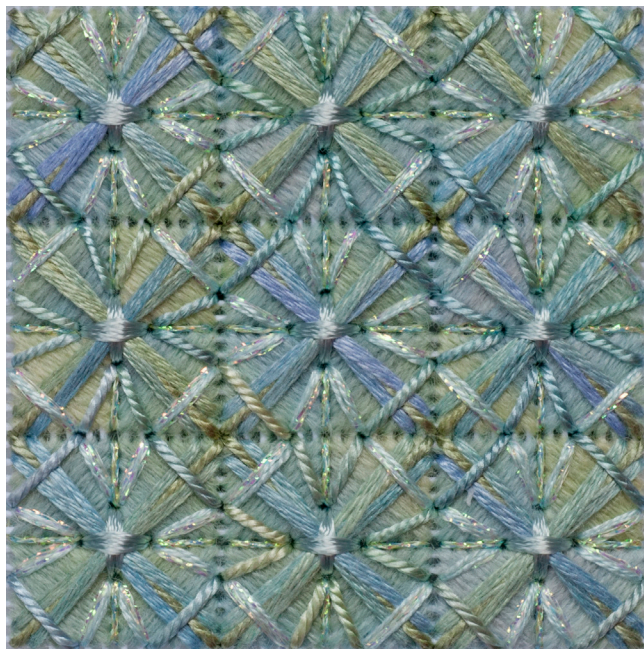
Kaleidoscope Squares

A Color Study of Shifting Patterns

by Deborah Forney

Panel 4: Organic Shading Experiment

Panel 4 Goal: Reduce the visual impact of the geometric pattern by using overdyed threads.



Panel 4 Canvas Preparation:

- Step 1: Decide how many organic shading samples you wish to create. Each 36 x 36 intersection square is 2" square. A margin of 2" on each side of the stitched area is sufficient. If working only one 36 x 36 intersection square, the total canvas size is 6" square. If a larger area is to be worked, simply add the necessary margin of 2" per side. Draw a square that is 36 intersections by 36 intersections on the canvas.
- Step 2: Cut your chosen 18 count mono canvas and tape the raw edges of the canvas with Artist's Tape.
- Step 3: Mount Panel 4 on stretcher bars.
- Step 4: Review the step by step stitch charts for the 7 Steps.
- Step 5: Collect your threads and begin stitching the square, completing each layer before adding the next.

Items to consider when choosing your threads for Panel 4:

- Overdyed threads that use one or more color families are perfect for this experiment since they add a softening effect to the pattern and can add small flecks of color in multiple areas.
- Stranded threads that can be needle blended for value shading or optical mixing are useful for this panel.
- Threads that vary in width within one skein can introduce another deconstructive element.



Suggested threads:

Choose threads in a large variety of textures and sizes but in identical or very similar overdyed colors. Try making one sample with low contrast in value and color as well as one with high color contrast. Thread dyeing companies like Threadworx, Thread Gatherer, Caron Collection, Threadnuts and Gloriana have good selections for Panel 4 experimentation.

Model threads for Light Green Sample:

Gloriana Lorikeet Lavender Ice Pastel #132W1
Gloriana Princess Perle Lavender Ice #132
Gloriana 12 Strand Silk Lavender Ice #132
Gloriana Hand-dyed Silk Ribbon Lavender Ice #132
Kreinik Metallic Size 8 Braid #9194

Model threads and textile card for Dark Blue Sample:

Painter's Threads Collection, Painter's Pixie #109 Picasso
(Pixies are a bagged collection of stitching products dyed in the same color palette.)

Additional notes regarding the organic shading for Panel 4:

- On the model samples, I chose to use thread manipulation as well as naturally occurring color shifts as I stitched the patterns.
- Thread manipulation is most evident in the dark blue sample - I carefully arranged the orange portions of the overdyed threads, so the orange was distributed throughout and appeared in varying orientations and locations. Orange, being the complement of blue, needed to be used sparingly on this panel and only in small accents or else the pairing of the complements would have created visual "bull's eyes" that defeated my plan to have an organic, unstructured looking pattern.
- Another tool for creating an organic impression in the dark blue sample is seen in the Upright Cross Stitches (Step 4). I altered the stitch sequence to further break down the built in symmetry of the pattern, allowing the top stitch to shift in orientation but in an intentionally random pattern.

